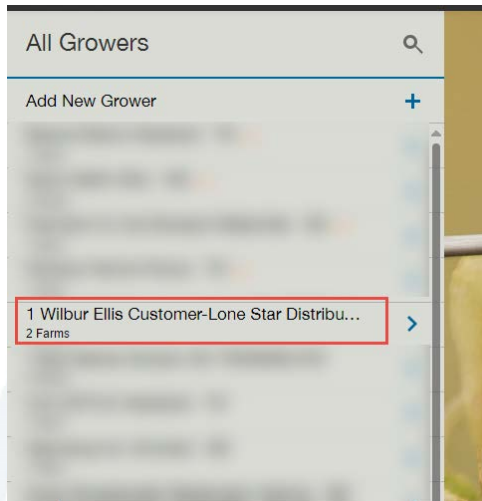
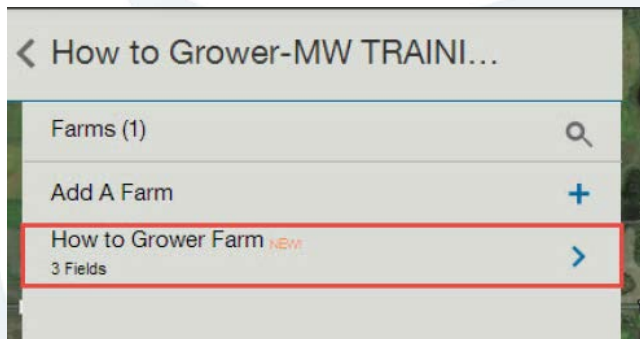


How to Create Zones Manually

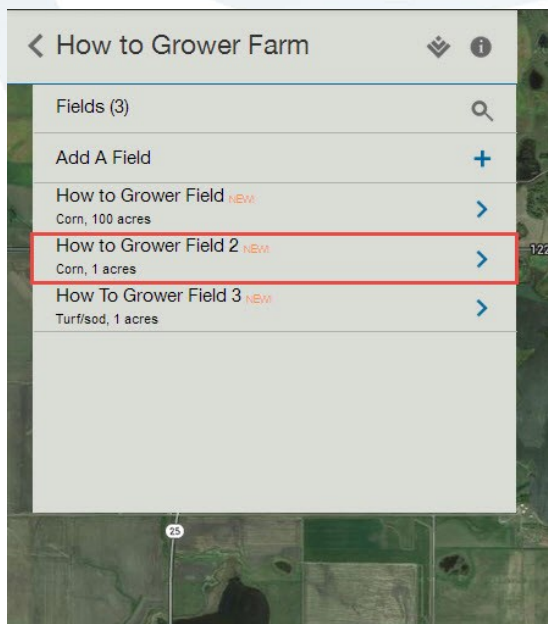
1. Select your **Grower**.



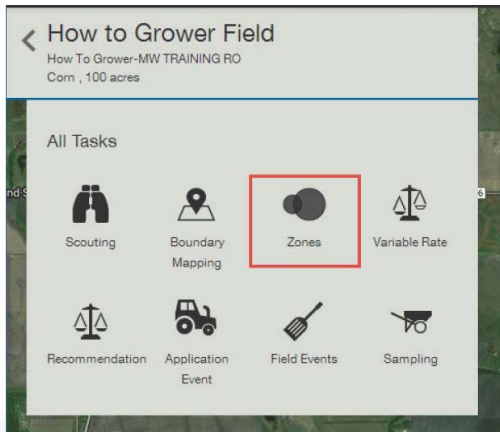
2. Select your **Farm**.



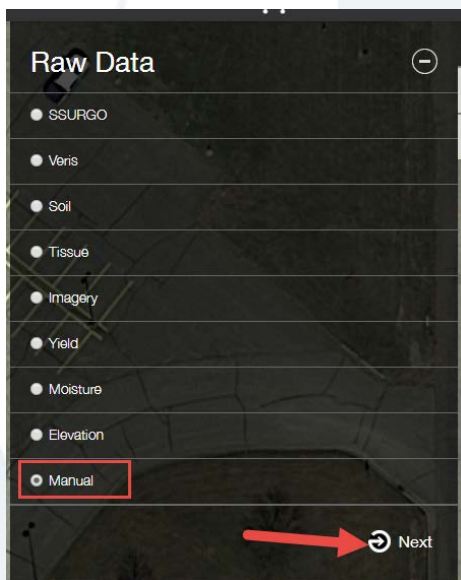
3. Select your **Field**.



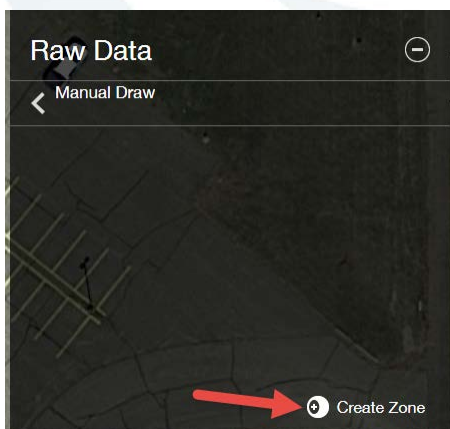
4. Select **Zones** icon.



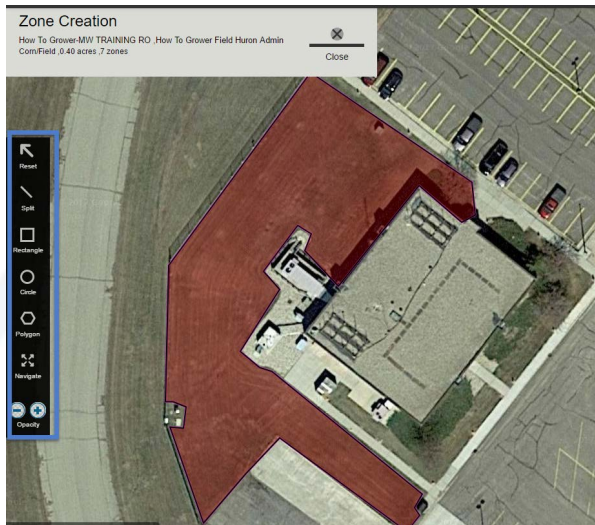
5. Select Manual and Next.



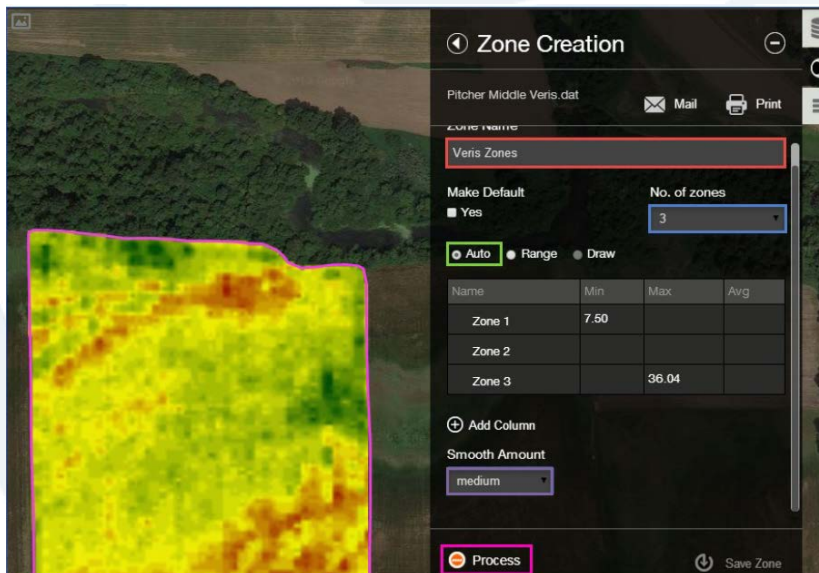
6. Select **Create Zone**.



- You can adjust the opacity of the map using the tool on the bottom left. This will adjust how well you can see the map. Use the other tools on the side to draw your zones.



- Type in the name of your zone and select how many zones there are. You can also add in a column at the same time.



9. Right click on each of your zones to assign them to the appropriate zone.



10. Once you are done, hit process and Save.

