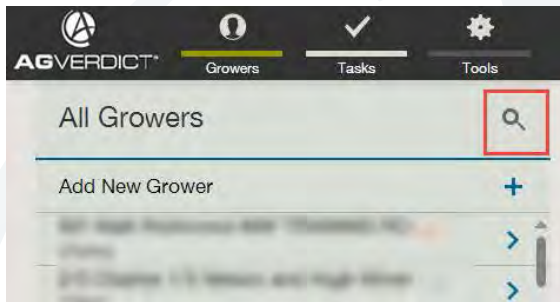
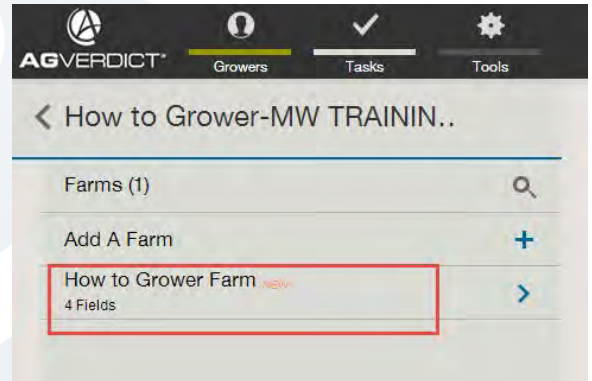


Creating a Directed Sampling Event (Web)

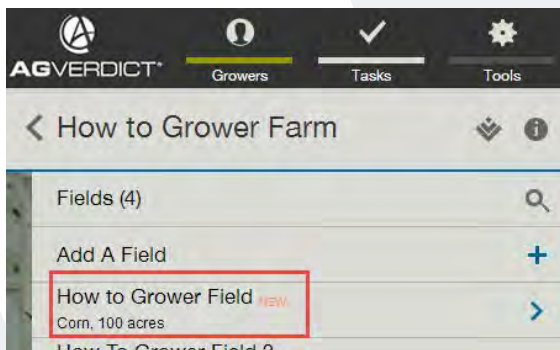
1. Under Growers, use the **SEARCH** function to locate grower.



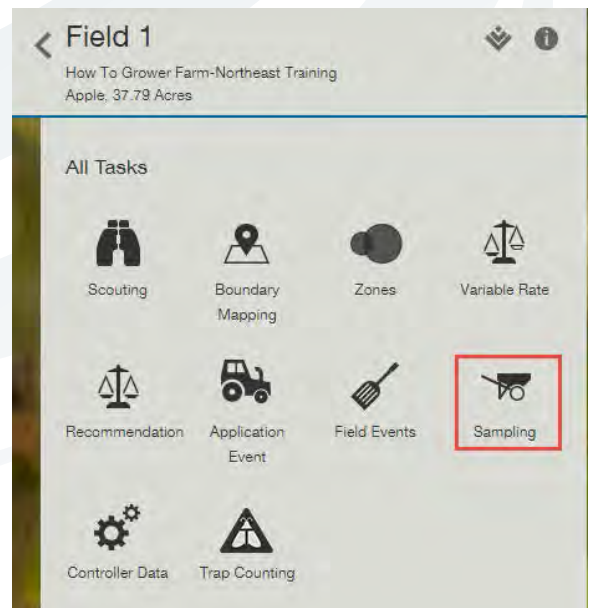
2. Choose **Grower Name**, and click on **Grower Farm**.



3. Choose **Grower Field**.



4. Once you've chosen your Grower Field, choose **Sampling**.



5. Select **New Sampling**.

Sampling
How To Grower Farm-Northeast Training, Field 1
Apple, 37.79 Acres

Soil Tissue

All Sampling Events

New Sampling +

6. Select **Directed** to create a new directed sampling event.

Sampling
How To Grower Farm-Northeast Training, Field 1
Apple, 37.79 Acres

Soil

Directed >

Grid >

Composite >

Zone Directed >

Zone Composite >

Directed Composite >

7. Fill in all details marked with a * as well as any other desired details. When finished, select **Save**.

New Sampling Required *

Sampling Method: Grid
Sampling type : Soil

Save Cancel

Sampling Details

Sampling Depth

No. of Depths *

1

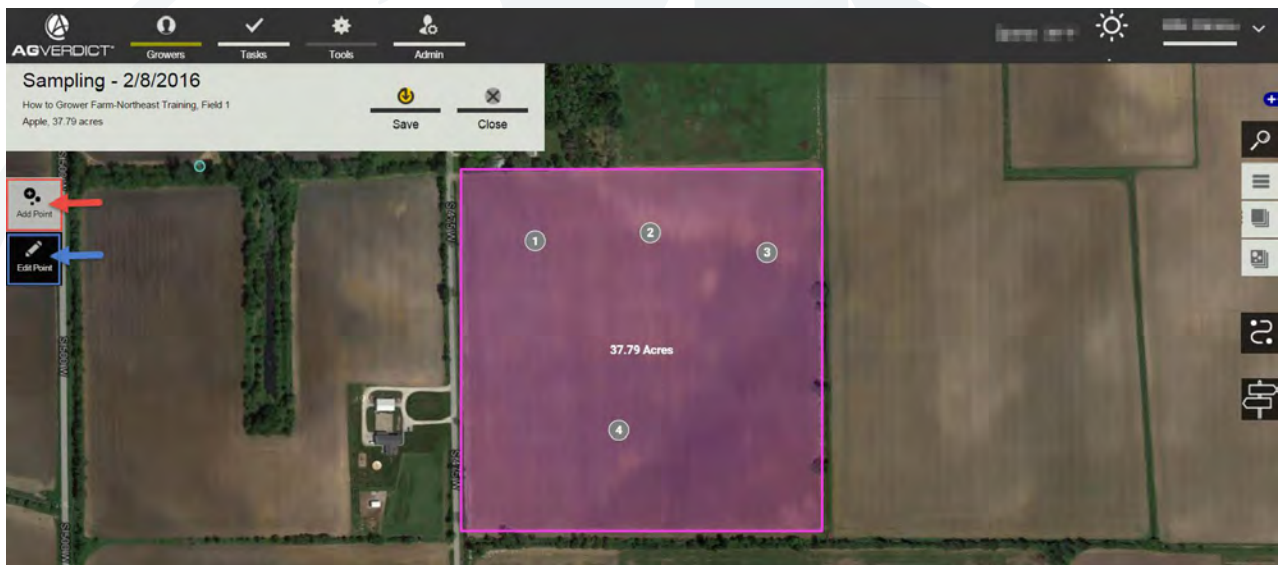
Depth	Starting depth (inches) *	Ending Depth (inches) *
Depth 1	0	10

Lab

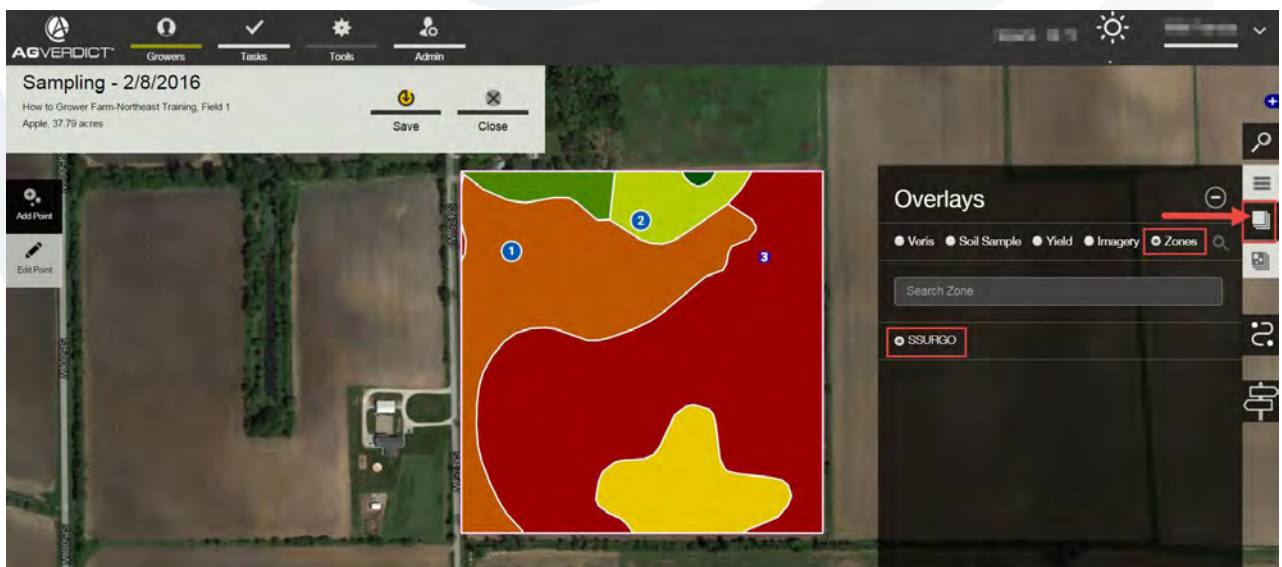
Analysis Lab *	Analysis Lab Package *	Lab Cost per Acre (\$)	Total Lab Cost (\$)
A&L Great Lakes Laboratories Inc.	S1	0.00	0.00

Lab Event Id

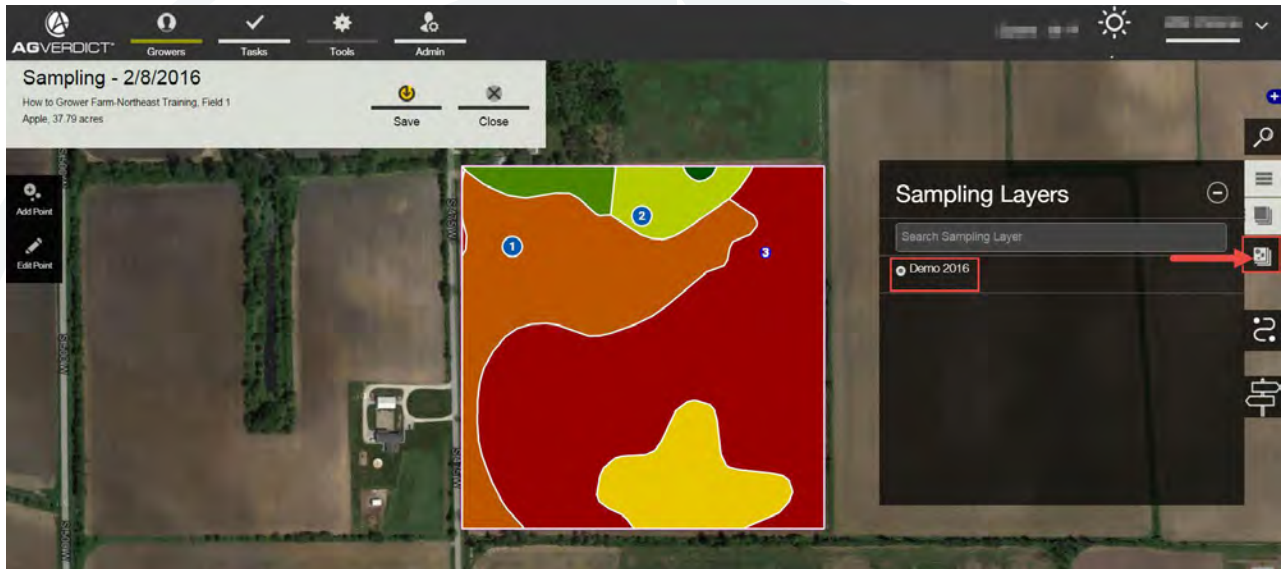
8. After saving your sampling details, you will be brought to the map of your field. This is where you will set up your points. Select the **Add Points** tool and click on the map where you'd like your sample points. You can use the **Edit Point** tools to move and delete (right click, delete) points.



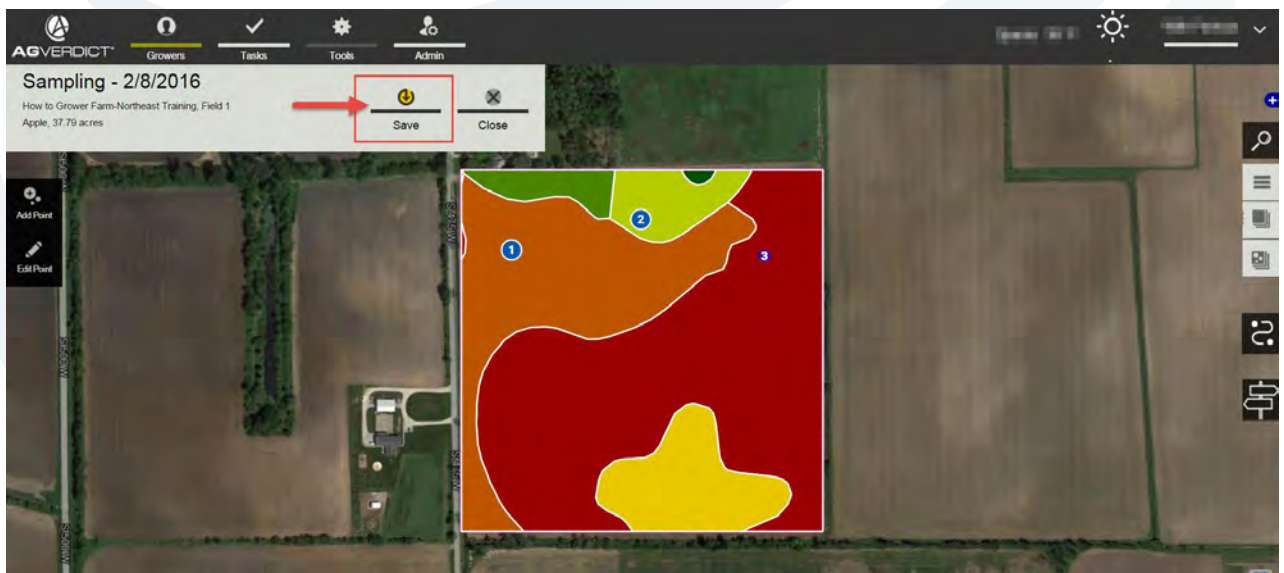
9. If desired, you make overlay a previously created zone. Click on the **Zone Layer** tool and select the zone you would like to use.



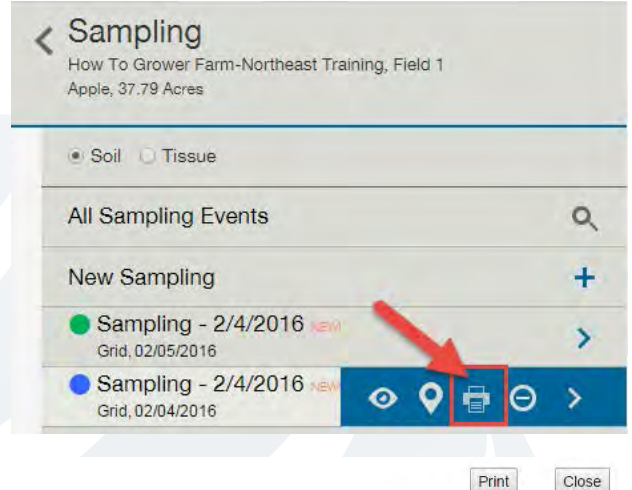
10. If you'd like to reuse previously save directed sample points, click on the **Sampling Layers** tool. You will see a list of previous directed sampling layers including grid and directed samples.



11. Once you have your sample points where you like them, select **Save**. Your samples are now ready to be collected.



12. To print your lab check in sheet, hover over the sampling event and click on the printer / **Lab Check in Sheet** icon. This will generate the lab check in sheet for you to send into the lab along with your samples.



Lab Checkin Sheet-Sampling - 2/4/2016

Grower / Farm / Field How to Grower Farm-Northeast Training,How to Grower Farm,Field 1	Commodity Apple-	Previous Commodity	EventID 56210
--	----------------------------	--------------------	-------------------------

Basic Information

Acres 37.79	Sampling Date 02/05/2016	Sampling Range 1 - 16
Sampling Type soil	Sampling Method grid	
Agronomist Patricia Wilk	Phone -	
Sampler Patricia Wilk	Lab Account#	
Lab A&L Great Lakes Laboratories Inc.	Lab Recommendations No	Lab Package S1
Commodity1 Apple-	Commodity2 -	Commodity3 -
Target PH	Layer Name Demo 2016	Lab Event Id
County Chippewa	Major Soil Type	

Sample Summary

Total Sample Points : **16**
 Total Depths : **1**
 Total Samples Collected : **16**

Sample Information

Depth	1	2	3	4	5	6	7	8	9	10	11	12
0in-10in	✓	✓	✓	✓	✓	✓	✓	✓	✓	✓	✓	✓



Grid Sampling on iOS

Note: before you may collect samples you need to set up the sampling event.

Setting Up a Grid Sampling Event on iOS

1. Select your Grower, Farm and Field.
2. Select Sampling.
3. If the Sampling Event has already been created, skip to step. Otherwise select Add New Sampling.
4. Select Grid.
5. Fill in all required sections. This includes: Date and Time, Depth and Lab.
6. Fill in any other desired information and Save.
7. The field and grid will be displayed on the screen. There are a few tools that will allow you to change the grid.
 - a. To show the names of the grid icons, swipe from right to left on the icons on the bottom corner of your screen.
 - b. To move the grid, simple swipe your finger along the screen and the field will move while the grid stays in place.
 - c. To remove the grid, tap on Remove Grid.
 - d. To change the size of the grid, select Resize Grid. Tap in the number box to enter in a new grid size. The default grid size is 2.5 acres.
 - e. To rotate the grid, tap on Rotate Grid. Then touch the screen with two fingers and rotate.
 - f. You may also overlay any previously created zones. To overlay zones, tap on the Zone Layer icon. Select your desired zone. To remove the zone, click on the x next to the zone name.
8. When you are finished, tap the yellow Save button.

Collecting Grid Samples with iOS

1. Navigate to your Grower, Farm and Field.
2. Select Sampling.
3. Select the Sampling Event; there will be a blue rectangle next to the event.
4. To show a zone overlay, tap on Select Zone Layer. Select your desired zone. To remove the zone, click on the x next to the zone name.
5. To record a point as collected, tap Record. You will see the point on the map turn from white to black.
6. To skip a point, tap on Skip Point. Confirm the skip by tapping done in the pop up window.
7. You may take samples in order or out of order. To change the sampling order, tap the sampling order icon
8. To add a new point, click on Add New Point. This will let you record a point at your physical location. The new point will be numbered as the last point/next highest number.
9. To Save and Complete, tap the Save button on the bottom right corner.
10. To Save and Finish Later, tap the save button on the top of the tools. Note: the sample data from the lab will NOT go into **AgVerdict** until the sampling event has been marked as completed.

Tips

- Make sure the bags are labeled correctly. For Example: 1, 2, 3...
Not: 1-7, 8-12, 13-14.... Or North, South... Otherwise the samples will not be uploaded to AgVerdict.
- Make sure the sampling event has been completed. The colored dot next to the event should be Orange.
- Make sure the event ID is on the lab check in sheet. This can be found under sampling details or on the lab check in sheet.

Grid Sampling on iPad Quick Reference Guide

AgVerdict Support 866-730-5149 or AgVerdictSupport@wilburellis.com

