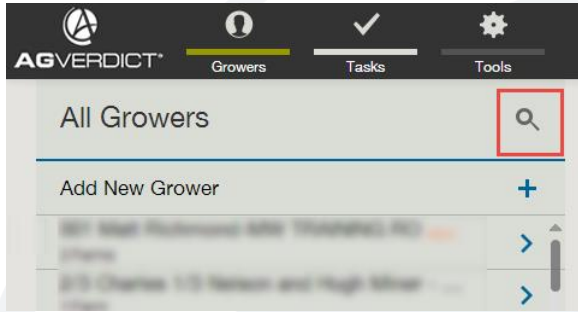
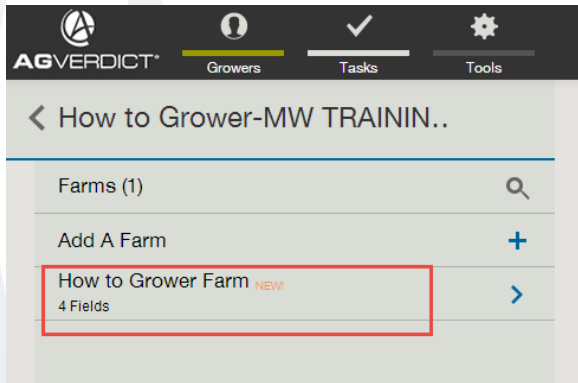


## Creating a Grid Sampling Event (web)

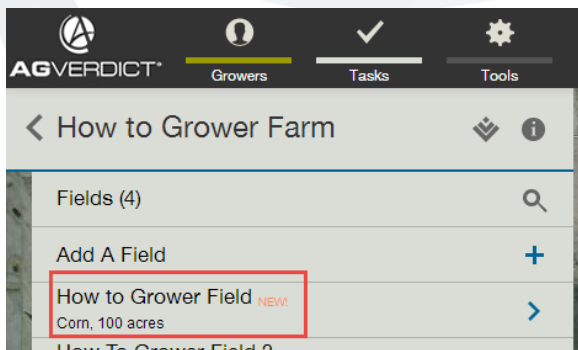
1. Under Growers, use the **SEARCH** function to locate grower.



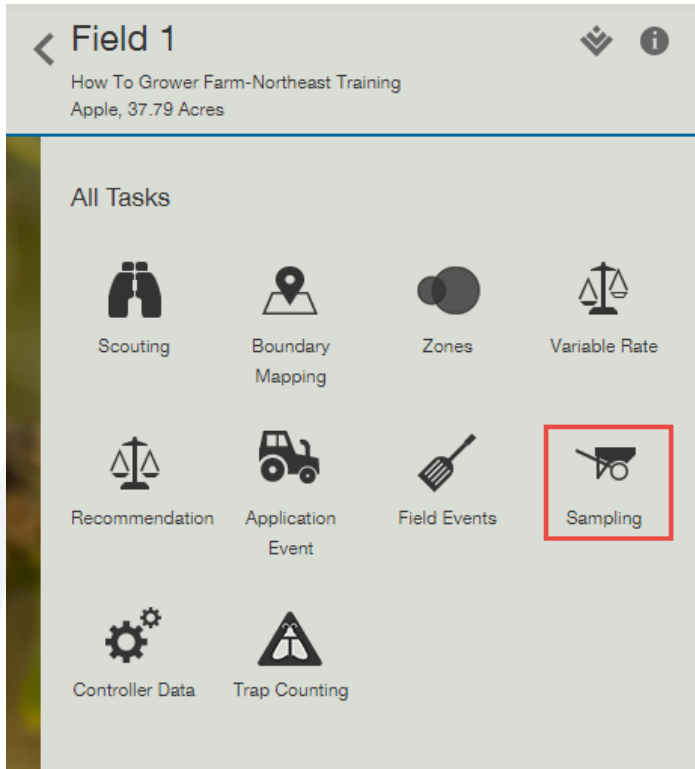
2. Choose **Grower Name**, and click on **Grower Farm**



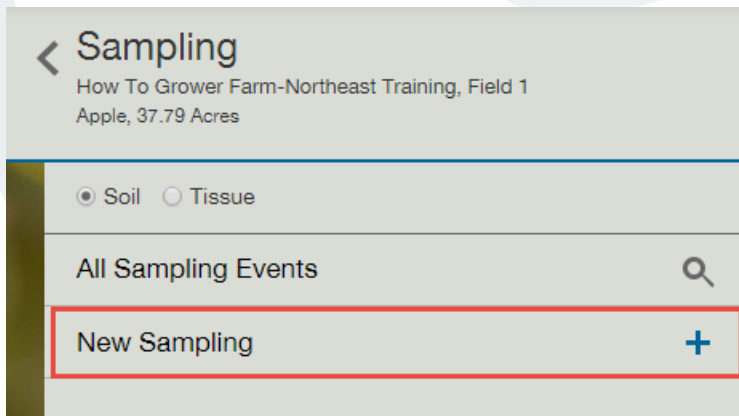
3. Choose **Grower Field**



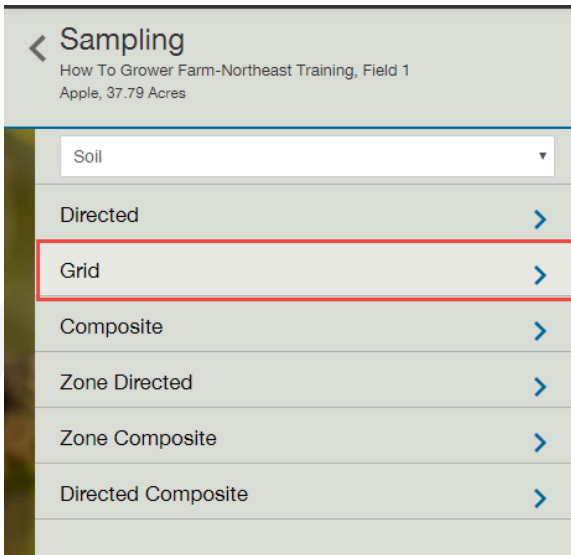
4. Once you've chosen your Grower Field, choose **Sampling**.



5. Select **New Sampling**



6. Select **Grid** to create a new grid sampling event.



Sampling  
How To Grower Farm-Northeast Training, Field 1  
Apple, 37.79 Acres

Soil

Directed

**Grid**

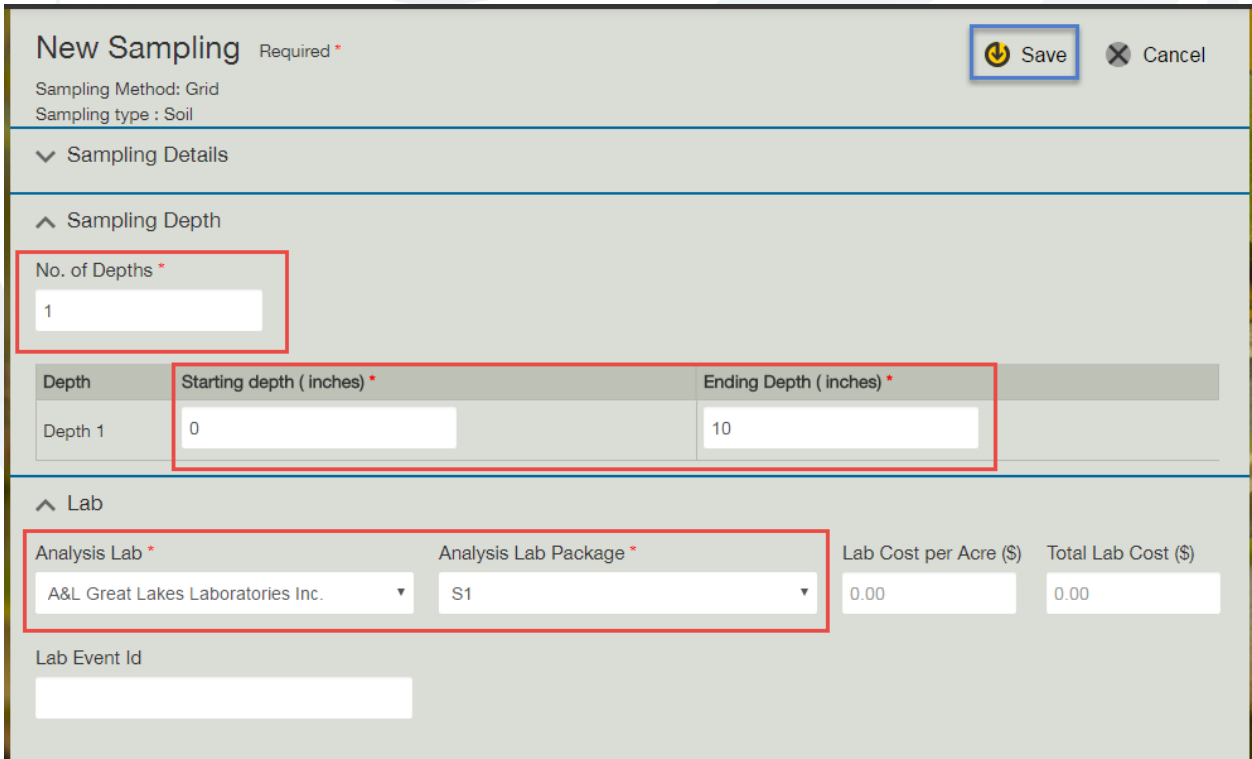
Composite

Zone Directed

Zone Composite

Directed Composite

7. Fill in all details marked with a \* as well as any other desired details. When finished, select **Save**.



**New Sampling** Required \*

Sampling Method: Grid  
Sampling type : Soil

Save Cancel

Sampling Details

Sampling Depth

No. of Depths \*

1

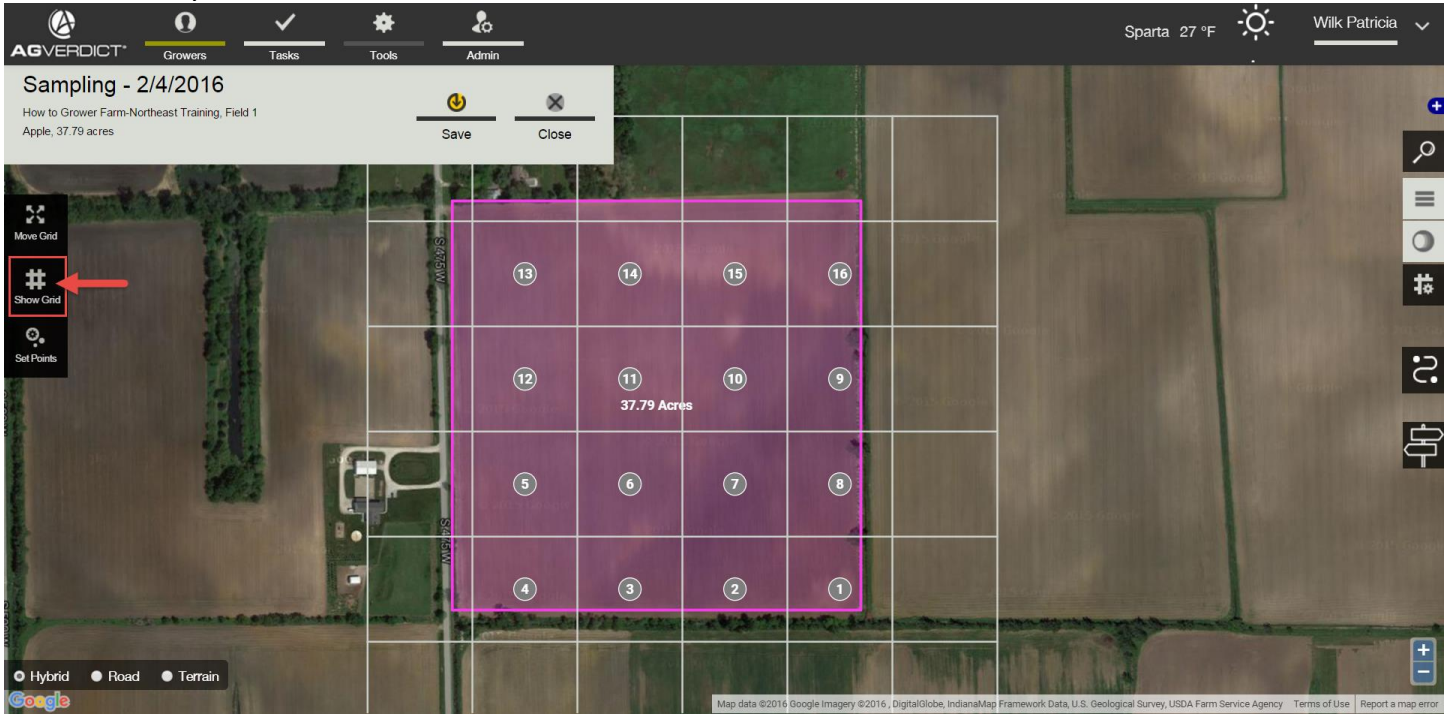
Depth	Starting depth ( inches) *	Ending Depth ( inches) *
Depth 1	0	10

Lab

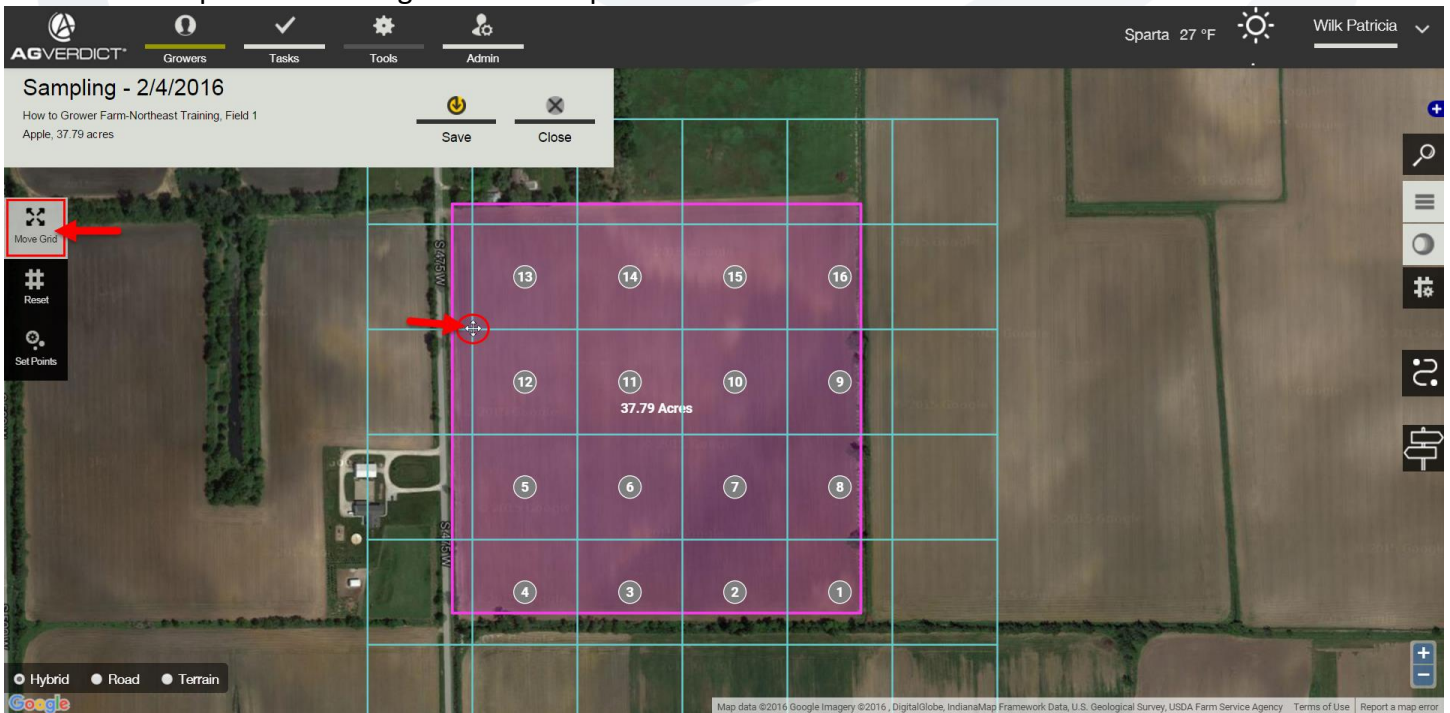
Analysis Lab *	Analysis Lab Package *	Lab Cost per Acre (\$)	Total Lab Cost (\$)
A&L Great Lakes Laboratories Inc.	S1	0.00	0.00

Lab Event Id

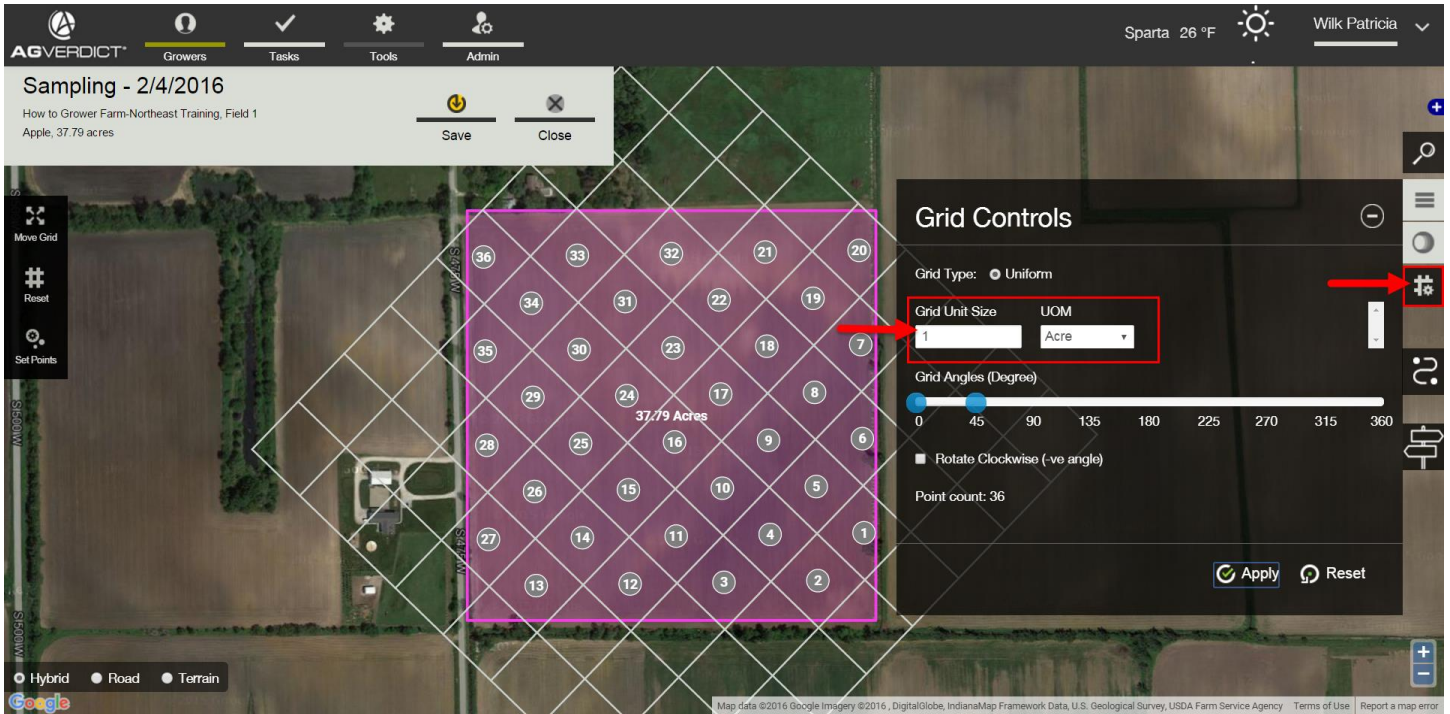
- After saving your sampling details, you will be brought to the map of your field. This is where you will set up your points. First, select **Show Grid**. You will then see a grid overlay on your field.



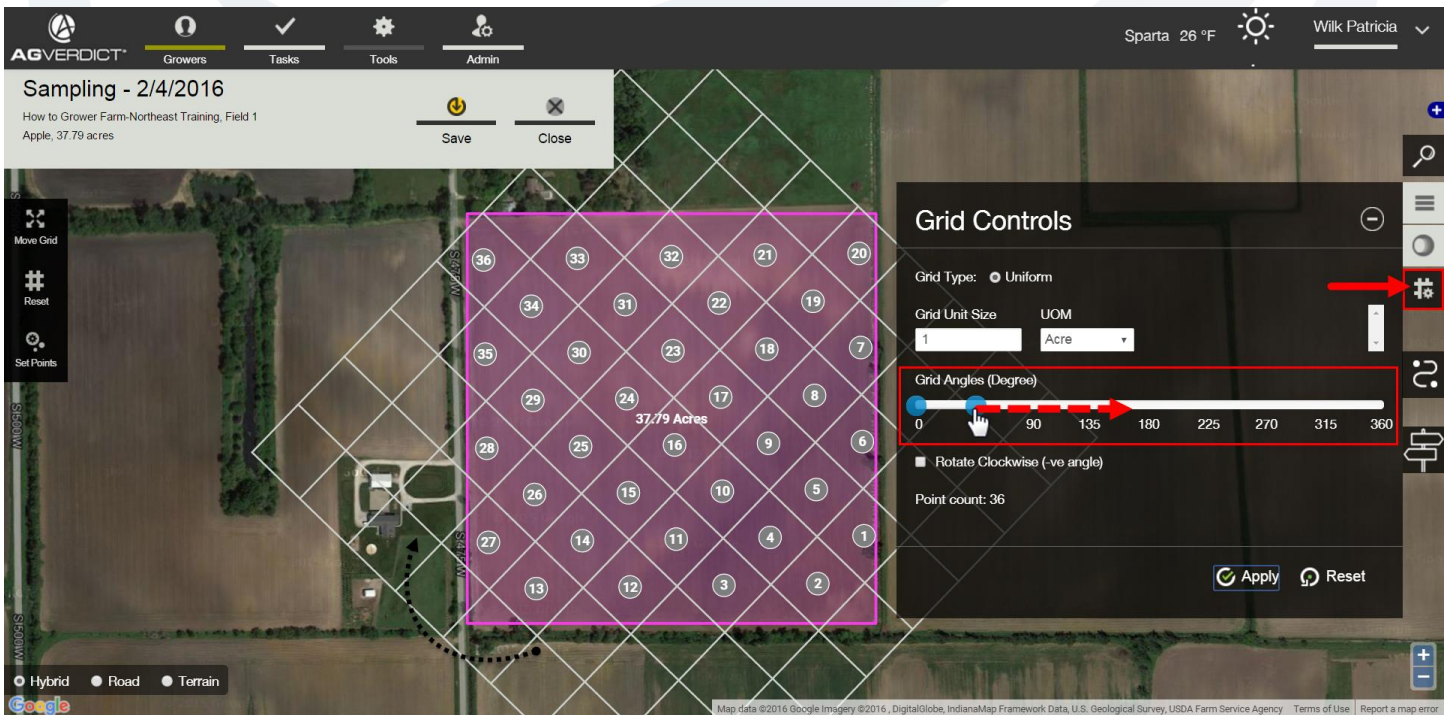
- Select the **Move Grid** icon to move the grid on the map. You can use the cursor to adjust the position of the grid on the map.



10. Select the **Grid Controls** icon to change the grid size or rotate the grid.



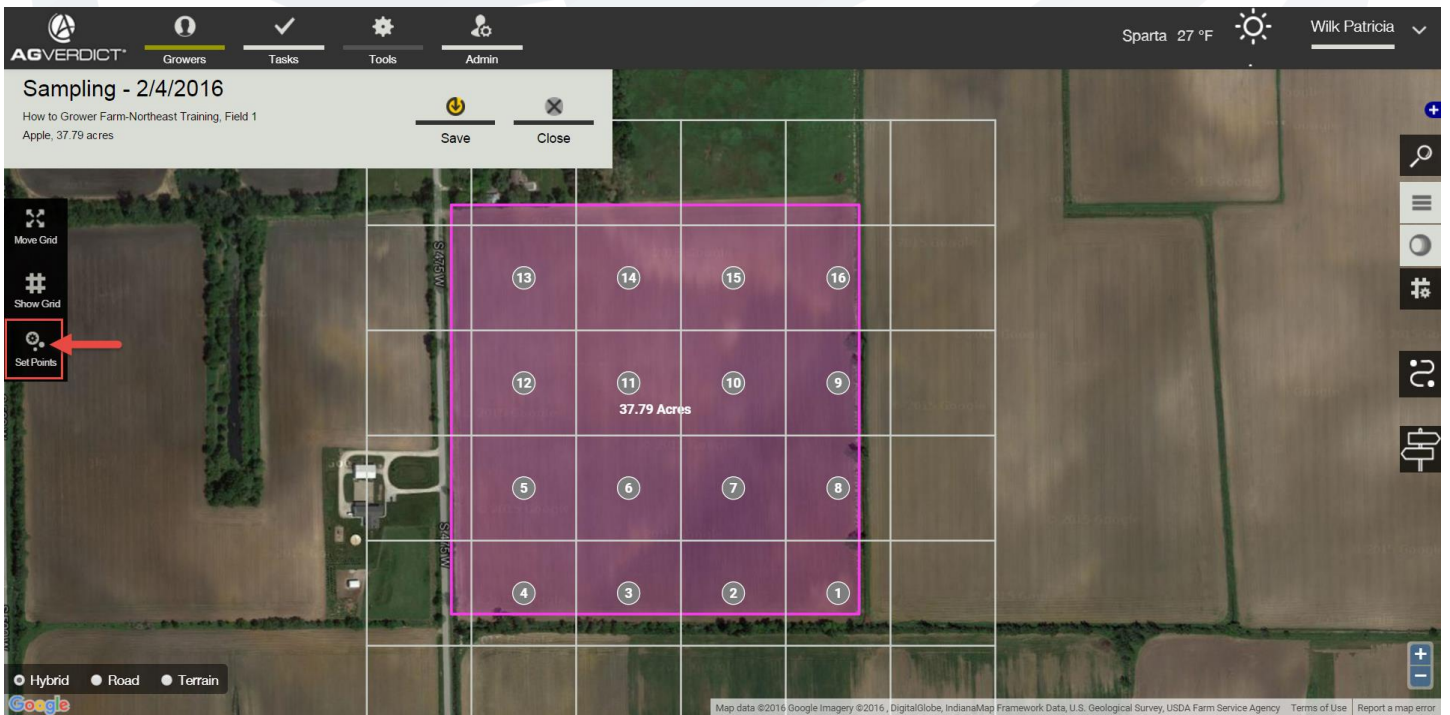
11. You can also use the **Grid Angle** feature to rotate the grid by moving the blue circle along the Grid Angle bar.



12. If desired, you make overlay a previously created zone. Click on the **Zone Layer** tool and select the zone you would like to use.



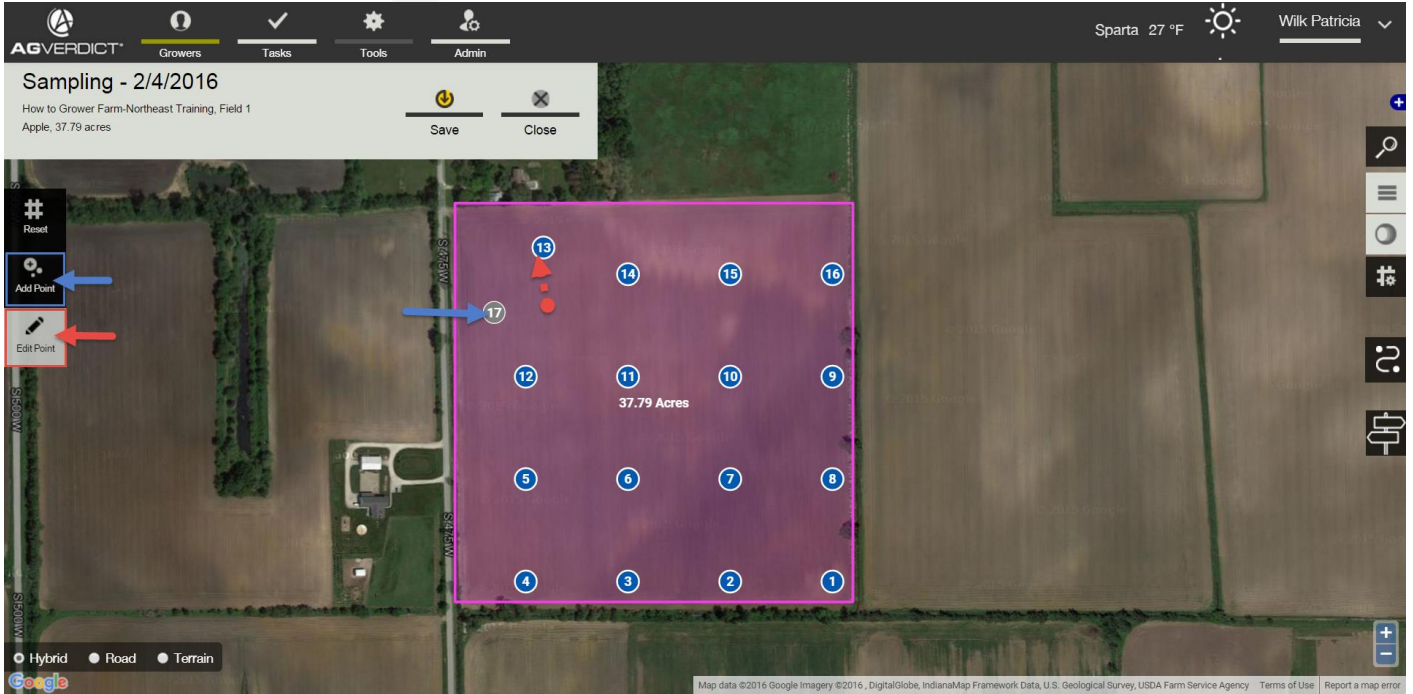
13. To move sample points on the map as well as delete and add points, click on **Set Points**.



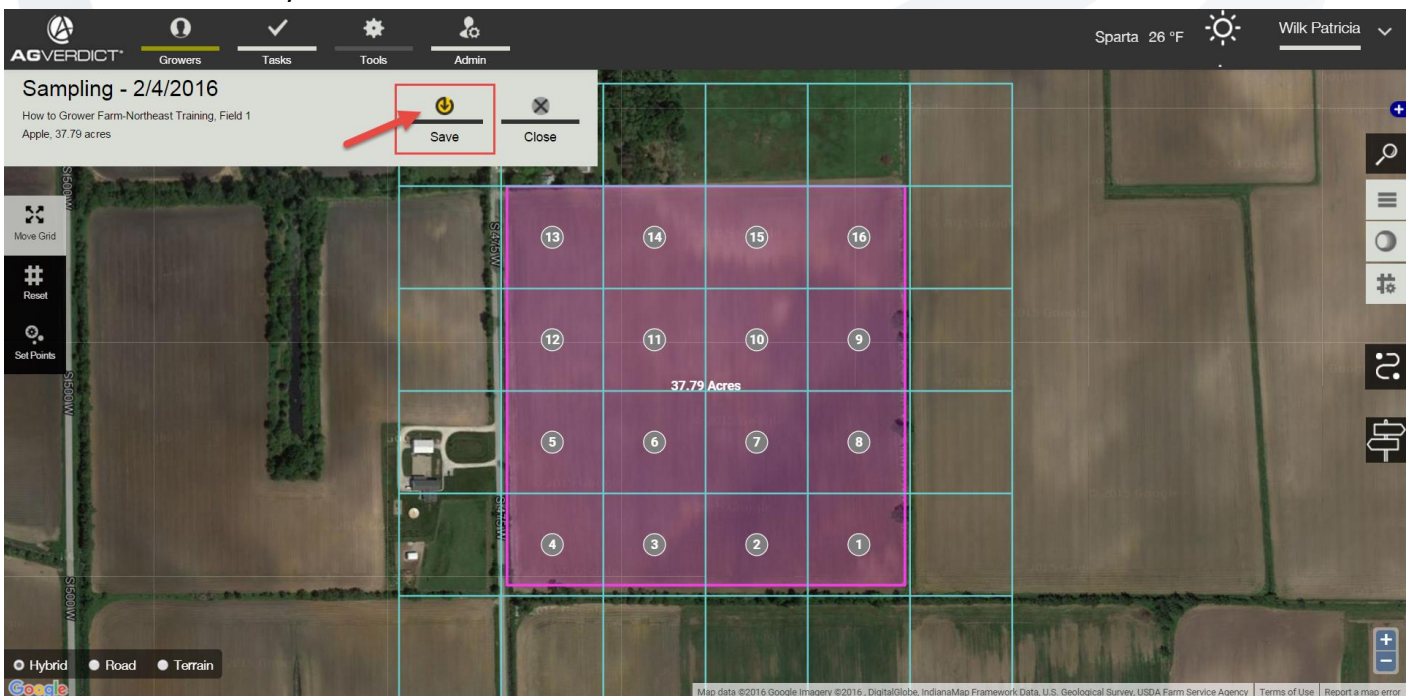
14. Once you've clicked on Set Points, you will see two tools: **Add Point** and **Edit Point**.

Add point will add another sample point wherever you click on the map.

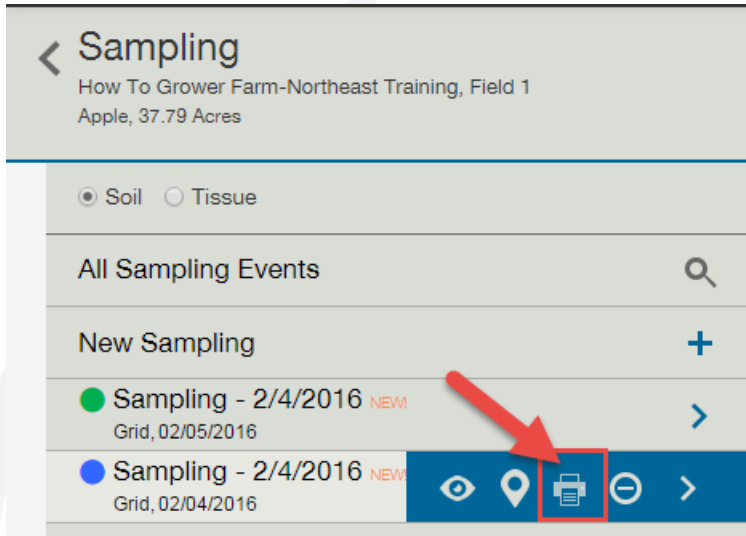
Edit point will let you move existing sample points as well as delete points by right clicking on them and selecting Delete.




15. Once you have your sample points where you like them, select **Save**. Your samples are now ready to be collected.




16. To print your lab check in sheet, hover over the sampling event and click on the printer / **Lab Check in Sheet** icon. This will generate the lab check in sheet for you to send into the lab along with your samples.



Lab Checkin Sheet-Sampling - 2/4/2016


Grower / Farm / Field How to Grower Farm-Northeast Training,How to Grower Farm,Field 1	Commodity Apple-	Previous Commodity	EventID 56210
---	---------------------	--------------------	------------------

**Basic Information**

Acres 37.79	Sampling Date 02/05/2016		
Sampling Type soil	Sampling Method grid		Sampling Range 1 - 16
Agronomist Patricia Wilk	Phone -		
Sampler Patricia Wilk	Lab Account#		
Lab A&L Great Lakes Laboratories Inc.	Lab Recommendations No	Lab Package S1	
Commodity1 Apple-	Commodity2 -	Commodity3 -	
Target PH	Layer Name Demo 2016	Lab Event Id	
County Chippewa	Major Soil Type		

**Sample Summary**

Total Sample Points : 16  
 Total Depths : 1  
 Total Samples Collected : 16

**Sample Information**

Depth	1	2	3	4	5	6	7	8	9	10	11	12
0in-10in	☑	☑	☑	☑	☑	☑	☑	☑	☑	☑	☑	☑