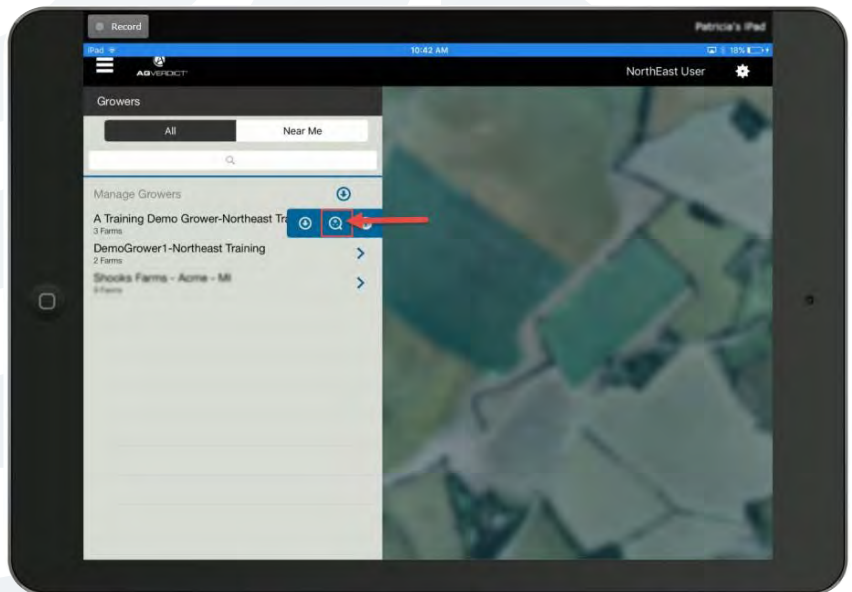


Scouting and Trap Counting

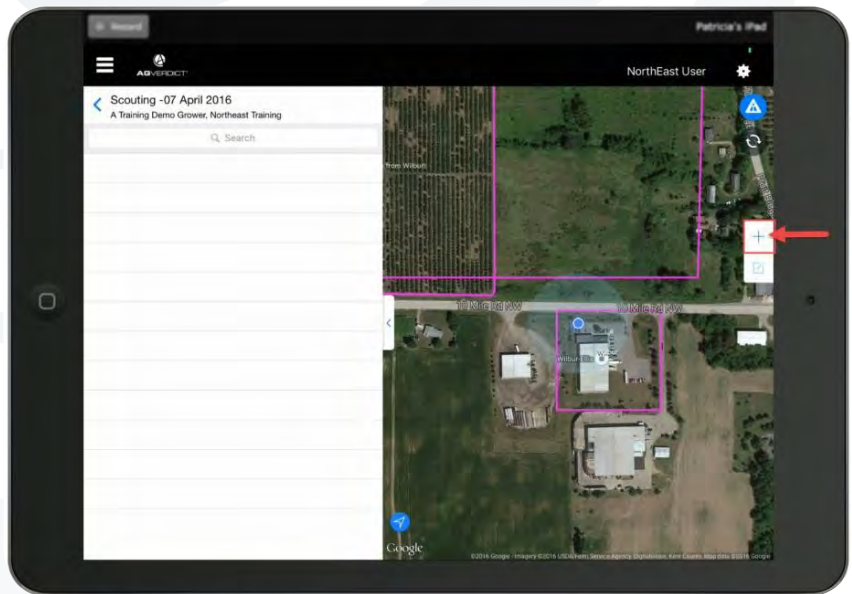
Scouting

1. Login to the AgVerdict app on your iPhone or iPad.

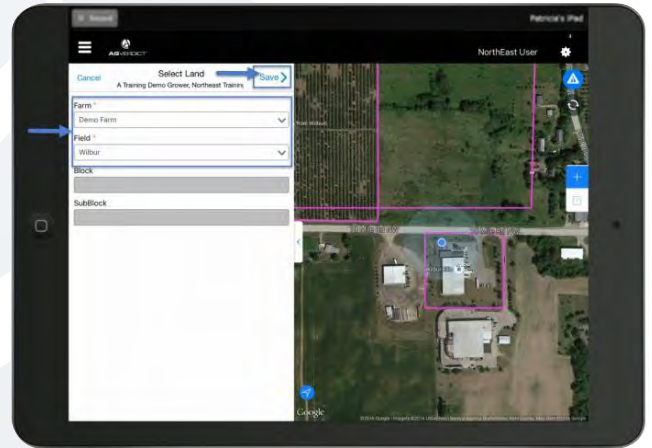
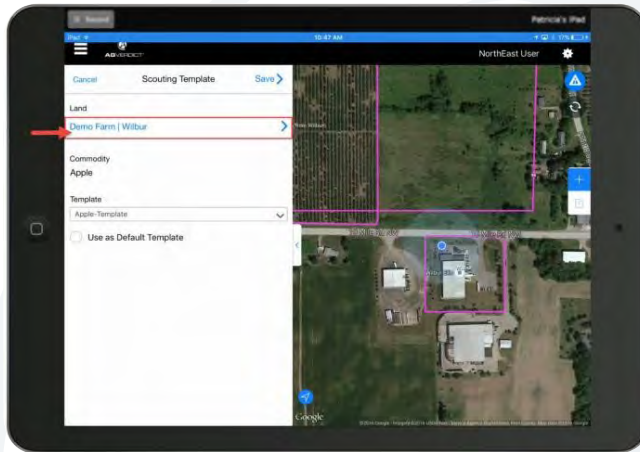
2. Swipe left on the grower and select the **Scouting Icon** (🔍).
 **Also available at the Farm, Field, Block and Sub-Block levels.



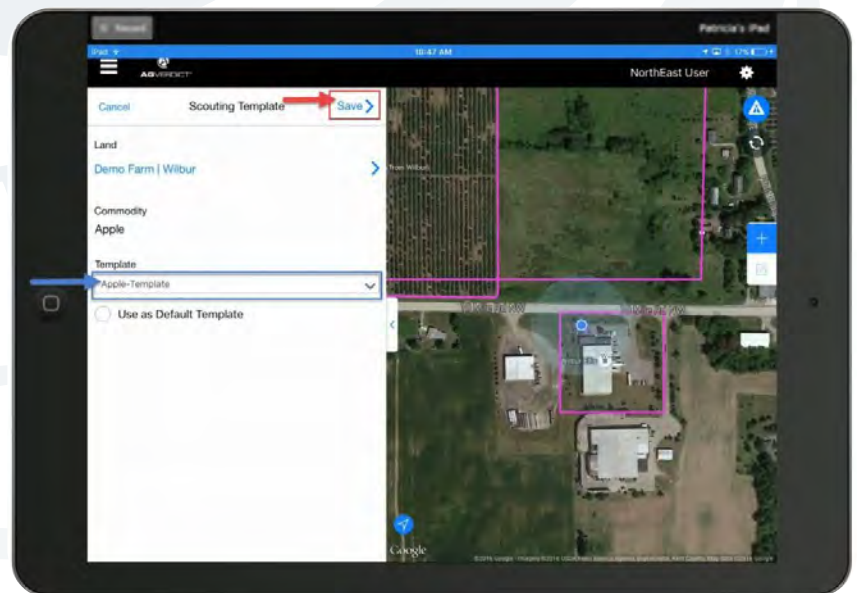
3. Map of Farm(s) and Field(s) appears. Tap on the **Add** icon to add a new observation.



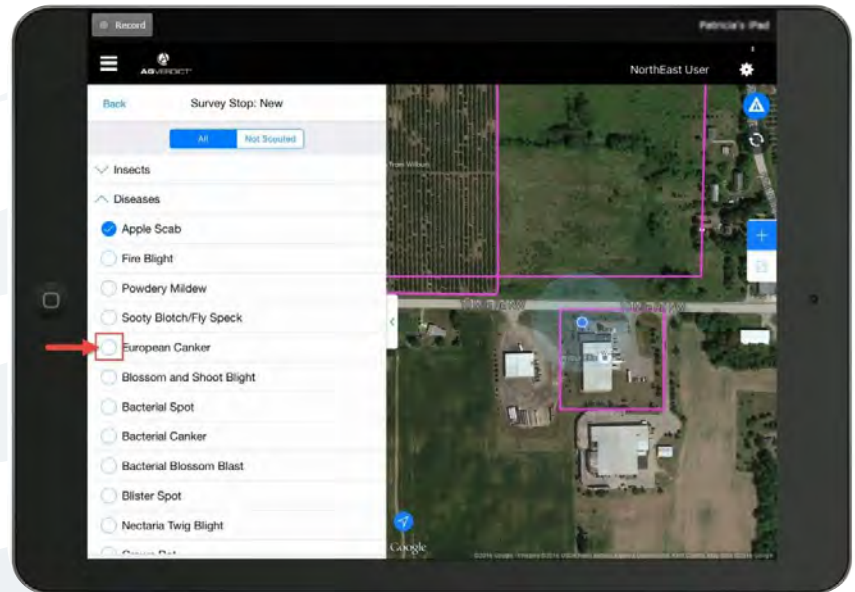
4. The scouting event is automatically recorded to the field you are located in. If you are outside of a field boundary or need to assign the scouting event to a different field, tap the land, select your desired **field** and **save**.



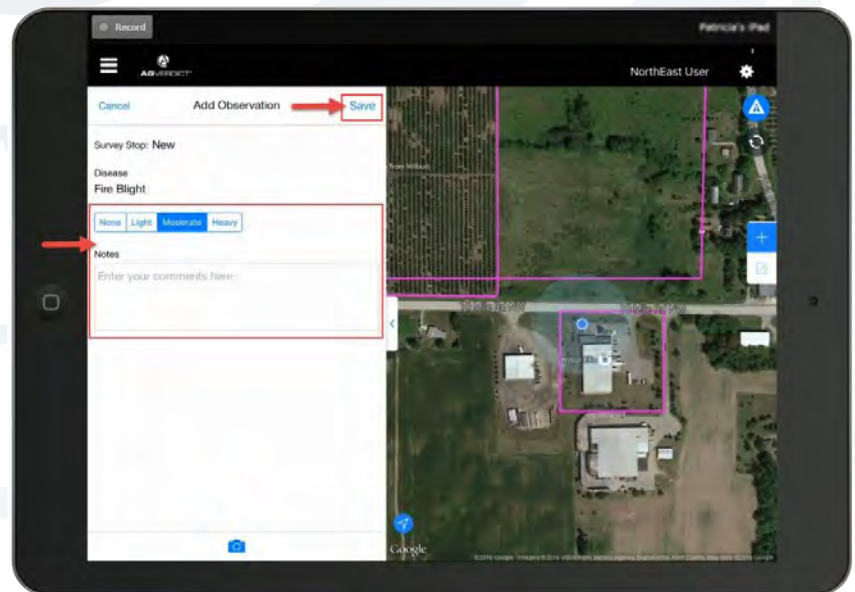
5. Choose a **Template** if necessary and tap **Save**.



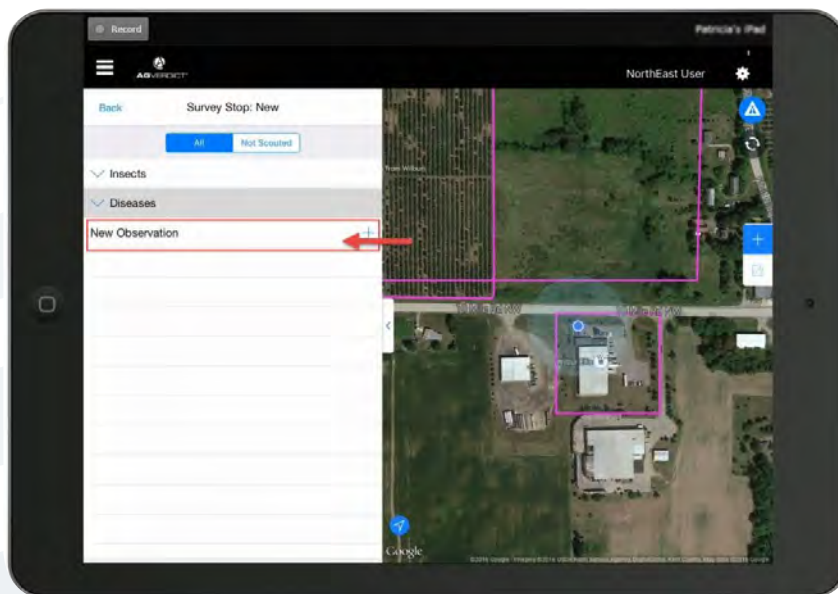
6. Select desired **Pests**.



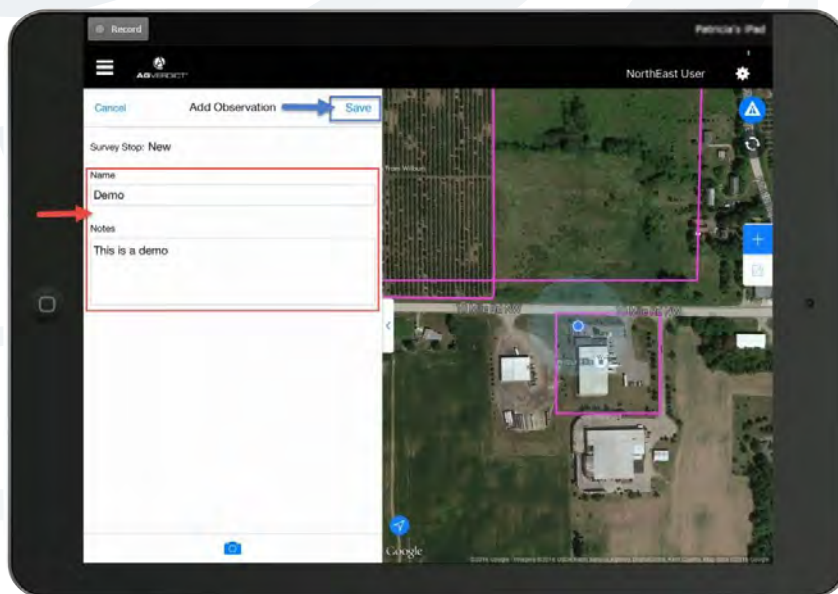
7. Set severity (each pest may be quantified differently), record any necessary notes or add a picture, then tap **Save**.



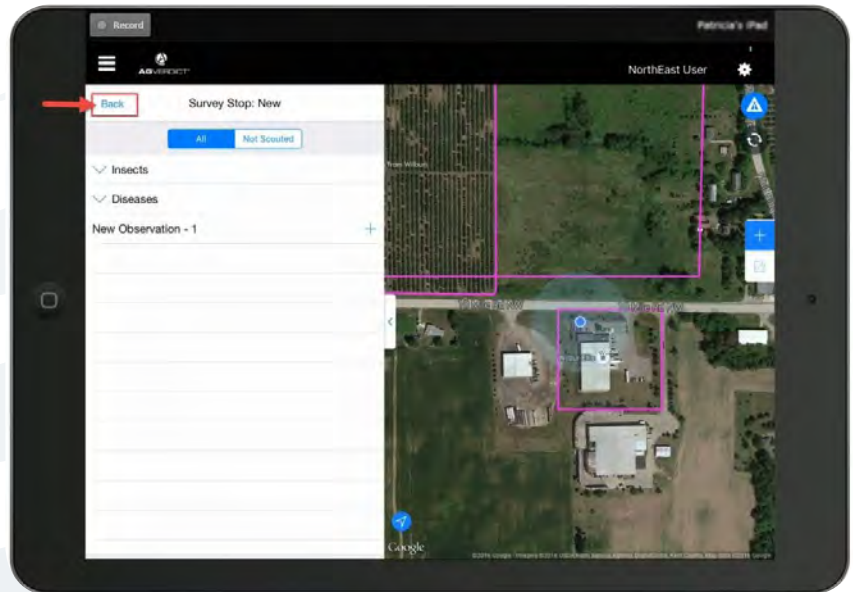
8. To add an independent observation that is not included in a scouting template. Tap **New Observation**.



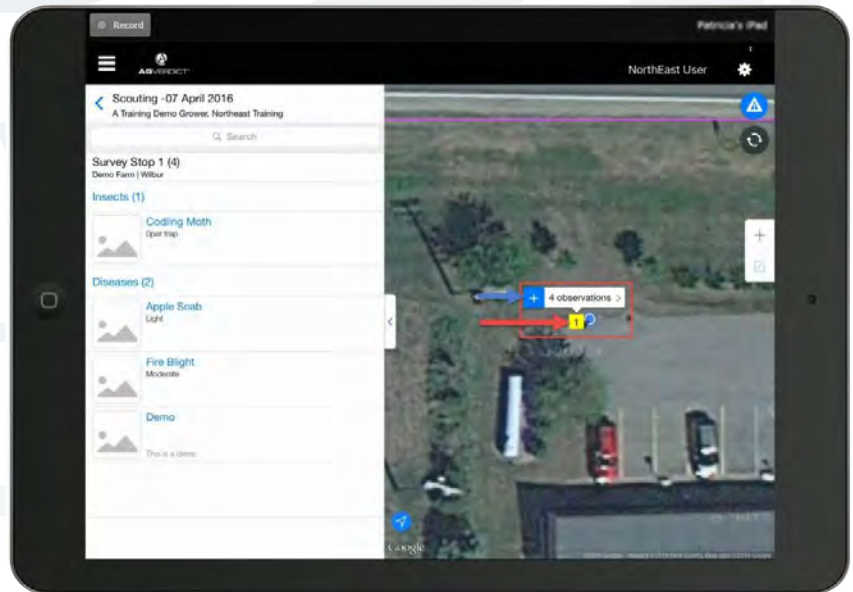
9. Give your Photo Observation a **name** and enter in any **notes**. Tap the **Camera Button** to take a picture.



10. When finished with your survey stop, tap **Back**.



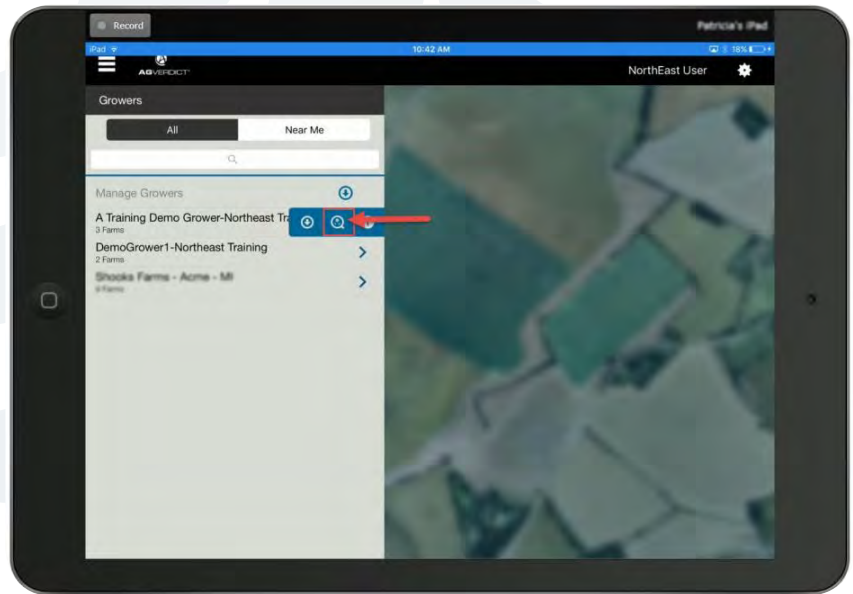
11. To add to an existing observation, simply tap the **observation** on the screen or list. Then **add new data**.



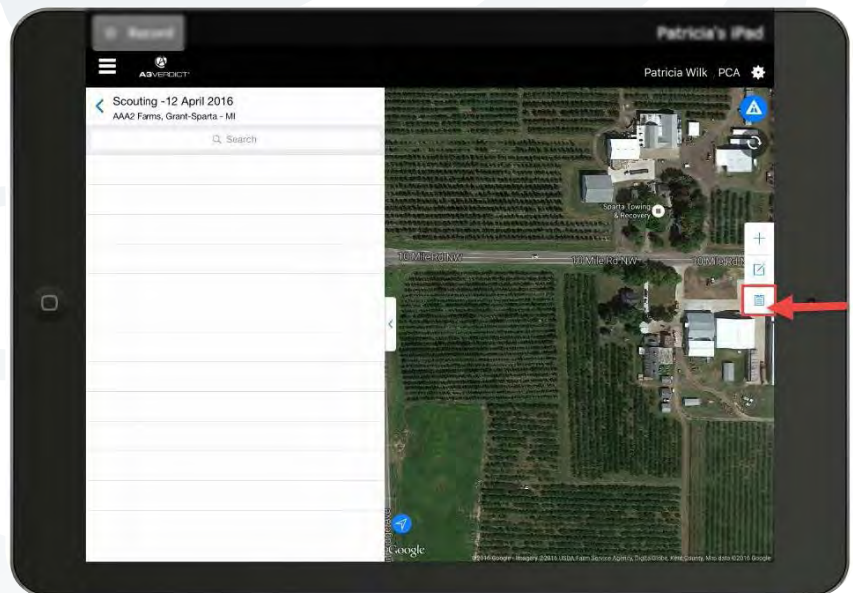
Generate a Scouting Report

1. Login to the AgVerdict app on your iPhone or iPad.

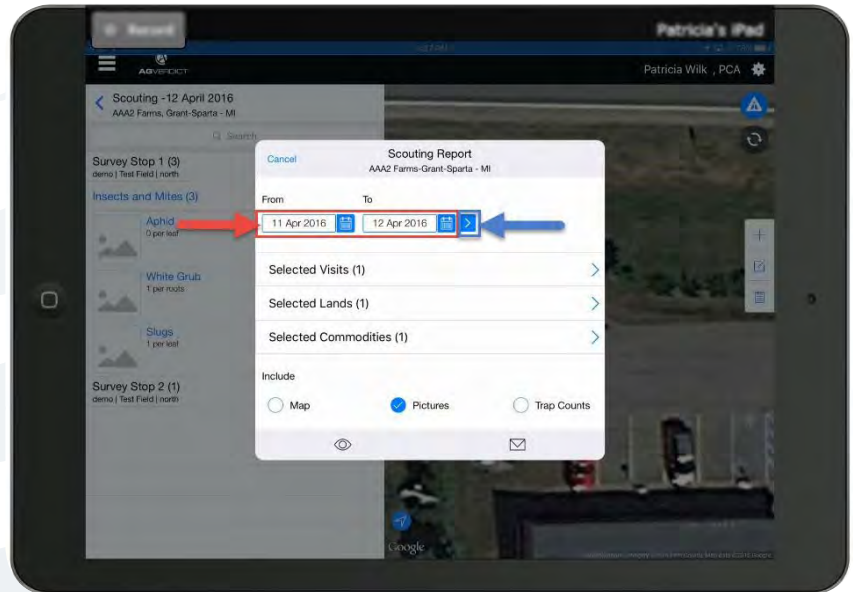
2. Swipe left on the grower and select the **Scouting Icon** (🔍).
 **Also available at the Farm, Field, Block and Sub-Block levels.



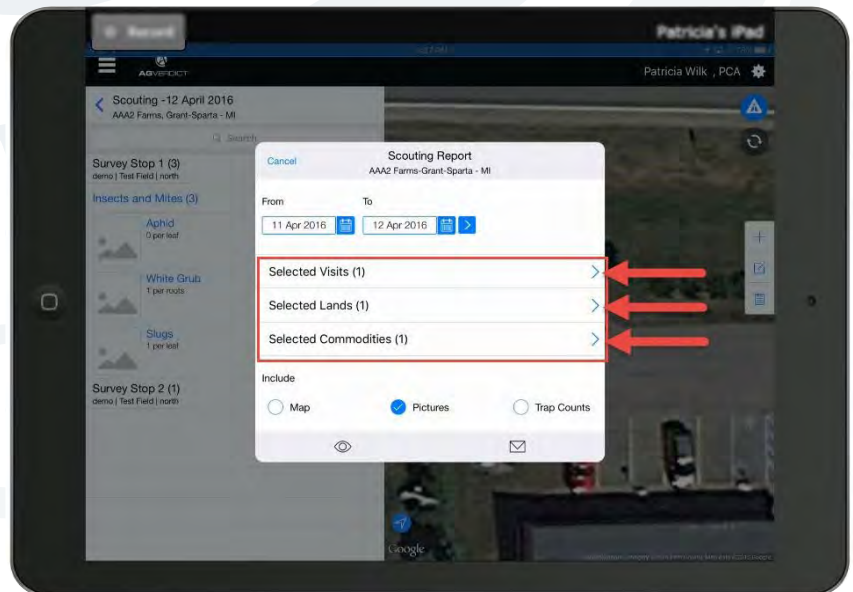
3. To generate a scouting report, tap on the **Report Icon** (📄).



4. Select your **Date Range** and tap the arrow to populate the scouting visits .



5. Select the **Visits, Lands, and Commodities** to be included on the report.





6. Select **options** to be included on the report. The scouting report may be **viewed/printed** or **emailed**.

Cancel

Scouting Report
 NAPI--Farmington - NM

Commodity
Farm
Field
Block
Sub Block

Group By

Date
Land

Show

Oldest First
Newest First

Include


Map


Land Thumbnail

Pictures

Trap Counts

Condensed Report Options





Cancel

Scouting Report
 NAPI--Farmington - NM

Include

Map

Land Thumbnail

Pictures


Trap Counts


Condensed Report Options

No Scout Names

No Category Columns

No Key for Pest Values

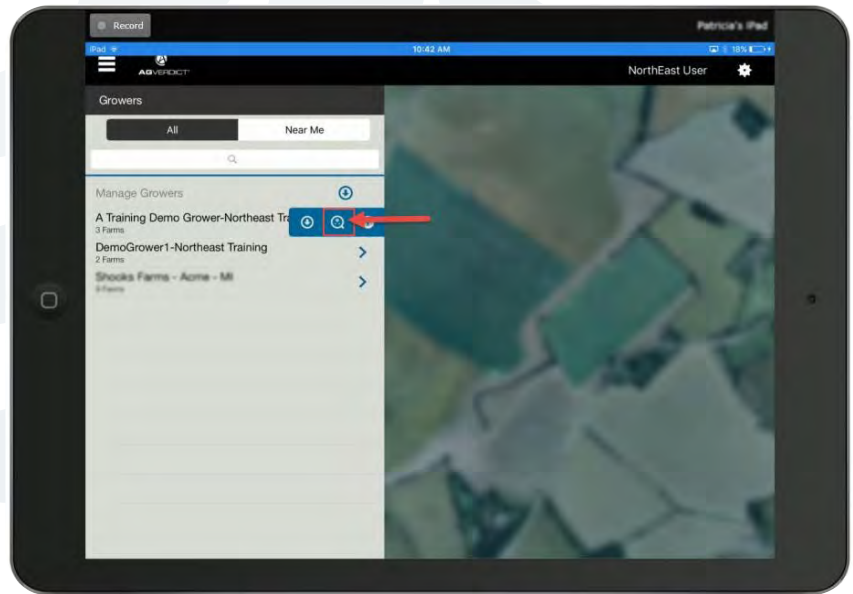




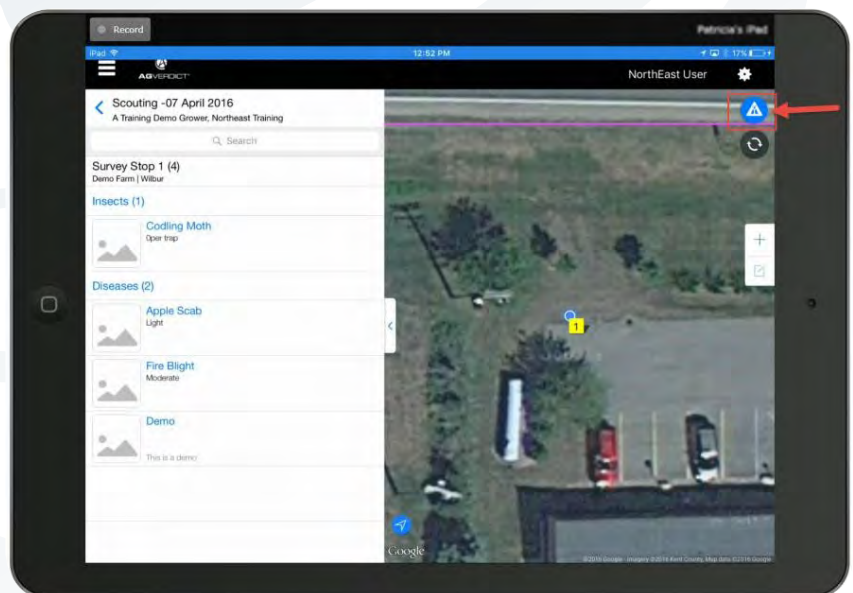
Trap Counting

1. Login to the AgVerdict app on your iPhone or iPad.

2. Swipe left on the grower and select the **Scouting Icon** (🔍).
 **Also available at the Farm, Field, Block and Sub-Block levels.

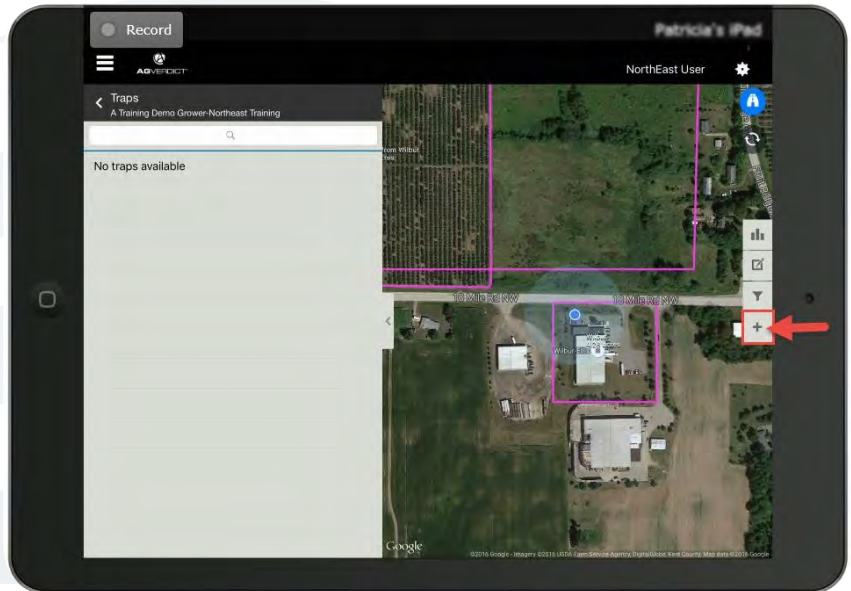


3. From the scouting screen, tap on the **Trap Counting Icon** (🚩).



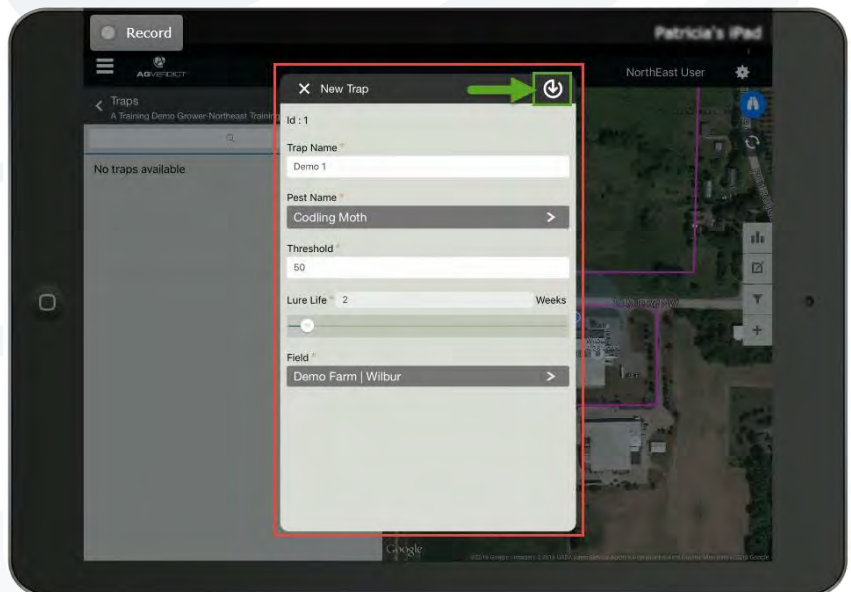
To Add a New Trap

1. To add a new trap, navigate to the desired trap location in the field and click on the **Add Trap Icon**.

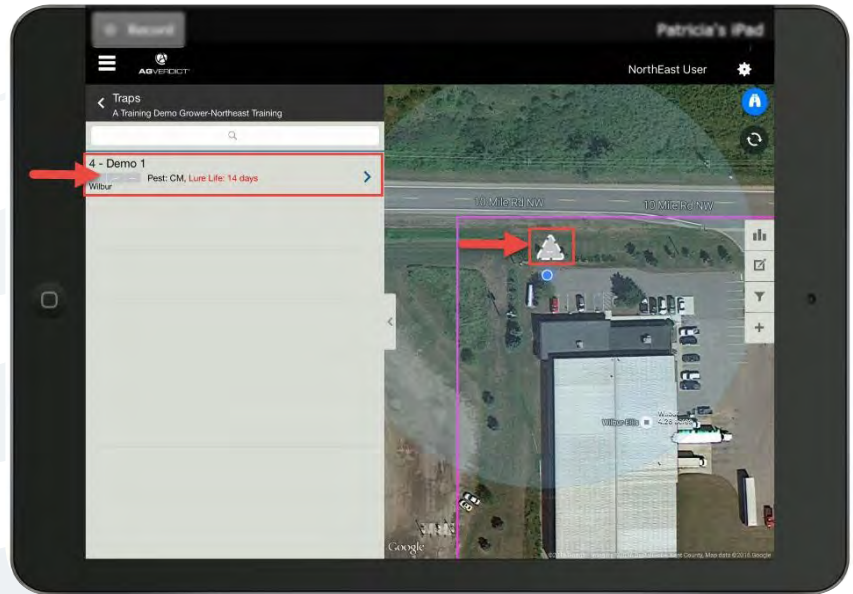


2. **Name** the new trap. Select the **pest, threshold, lure life** and **land**. If you are outside of a field boundary you will need to select the field the trap will be associate to.

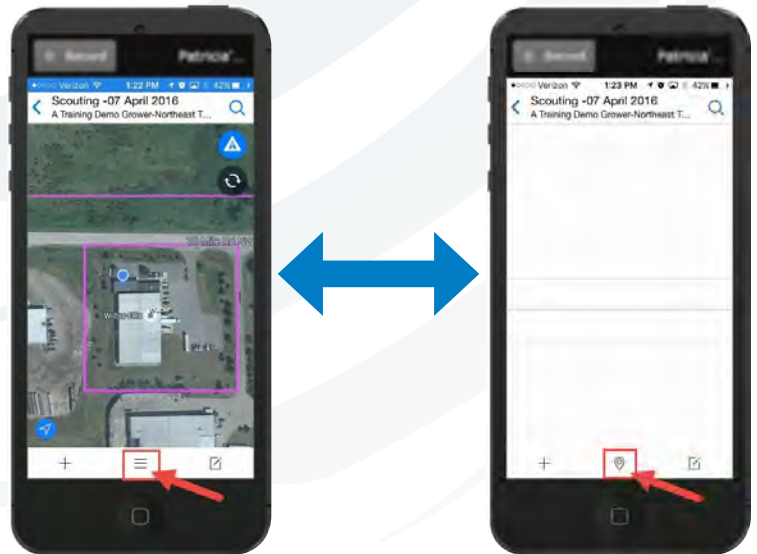
3. Once all information is entered, tap **Save**.



- You will now see your new trap on the map as well as in the list on your screen.



For iPhone there is a toggle button at the bottom of the screen. This will allow you to switch between a map and a list view of your traps.



The color of the trap corresponds to the last count taken for that trap.

New Trap / No Trap
Counts Taken

Last Count Far
Below Threshold

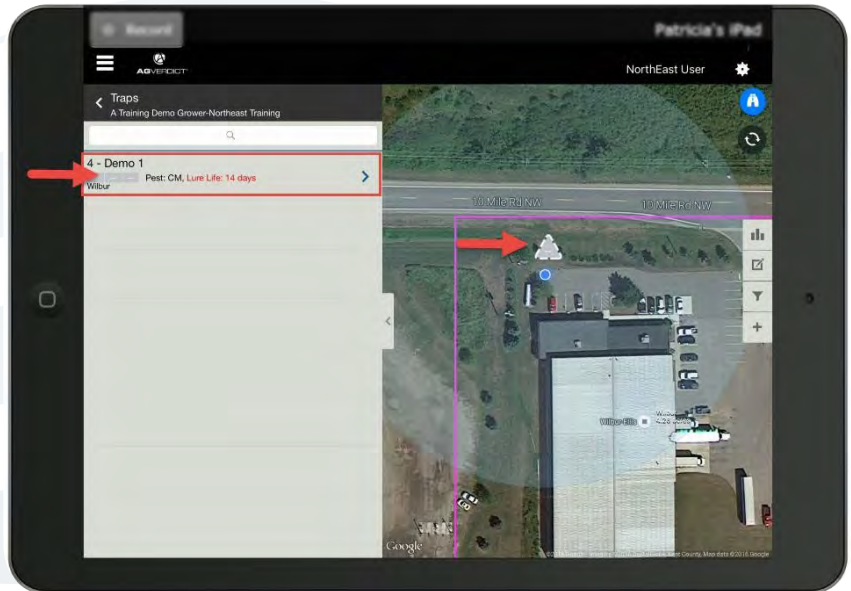
Last Count Slightly
Below Threshold

Last Count
Over Threshold

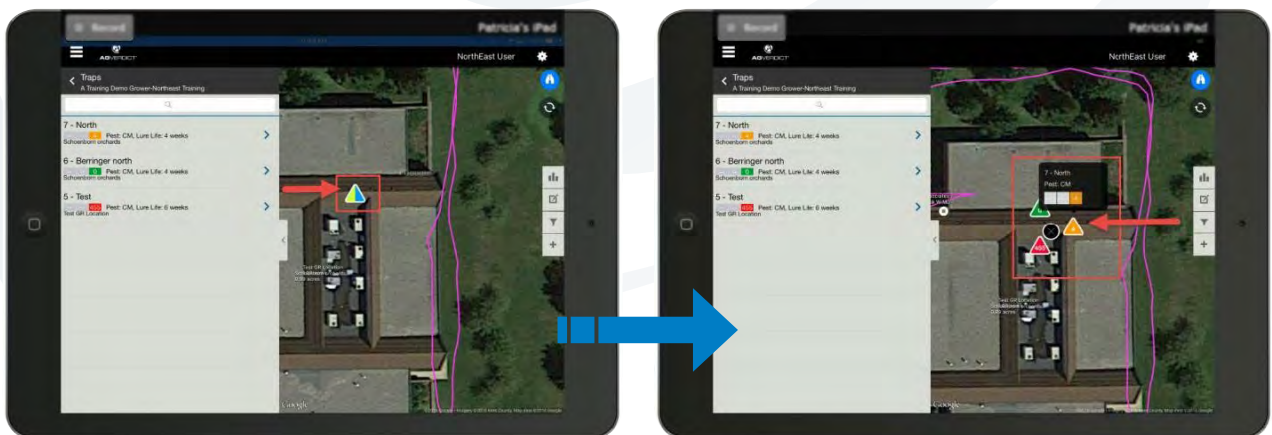
Two or More Traps in
the Same Location

Record a Trap Count

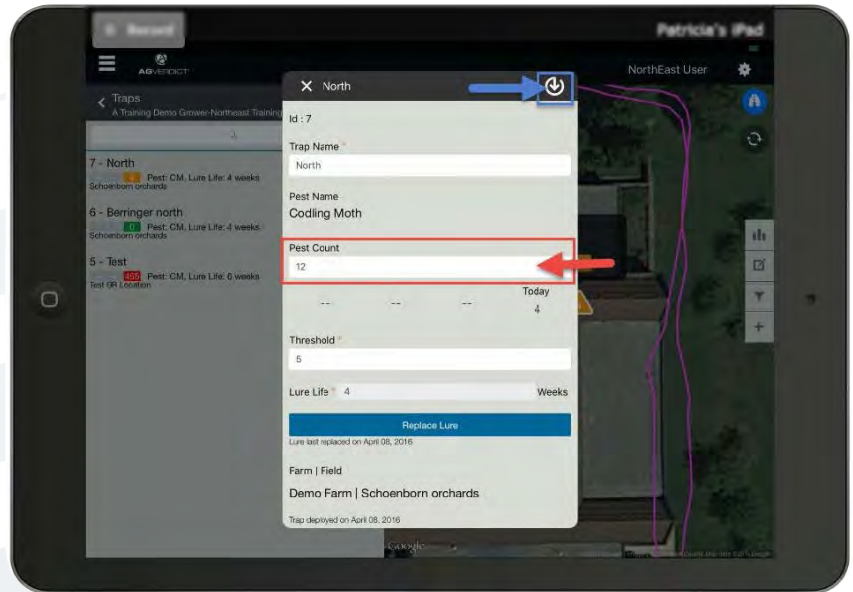
- From the trap counting tool in AgVerdict, you will see your trap on the screen as well as a list of your traps. To take a trap count, **tap on either the trap from the list, or the trap on the map.**



- If you have two or more traps at the same place, tap the (▲▼). to separate the traps on the screen. You can then record a single trap count.

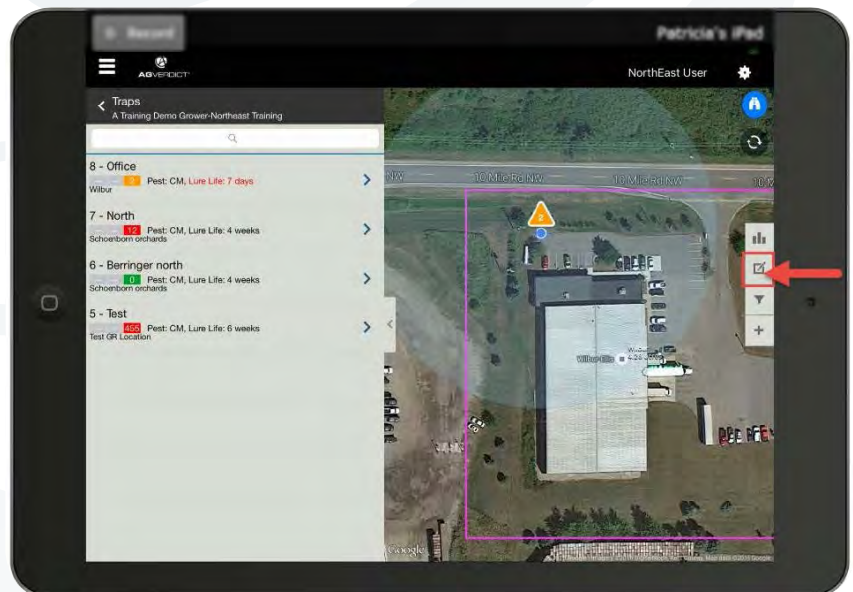


3. Enter in your **pest count** any other information and tap **Save** .

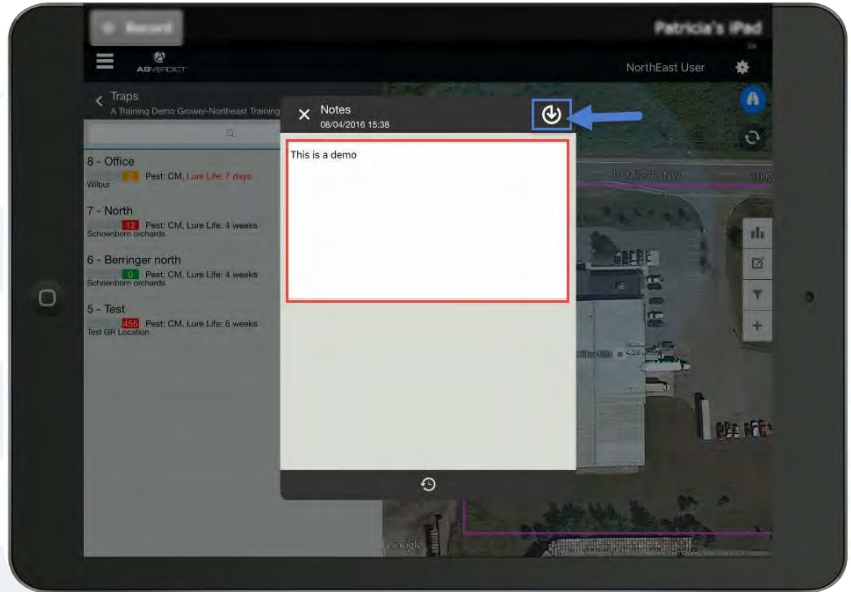


Enter Notes

1. To enter in notes, tap on the **Note Icon**.



2. Enter desired **Notes**, tap **Save** .

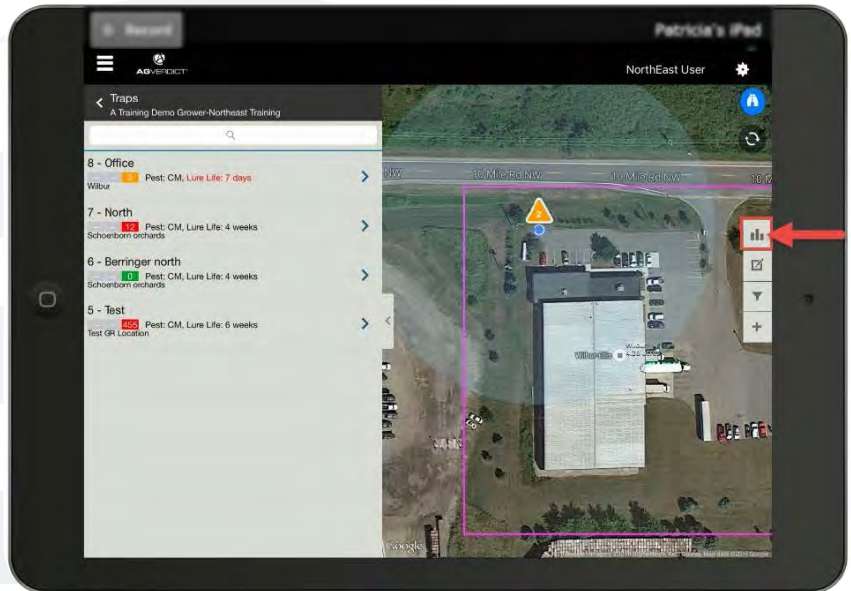


3. To see previously created notes, click on the **Note History Icon**.

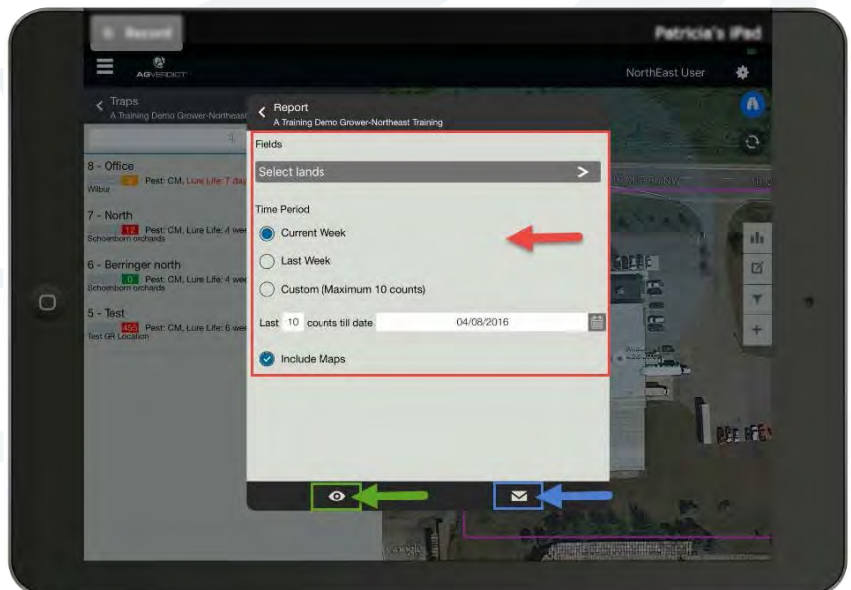


Generate Trap Counting Report

1. To generate a trap counting report, tap on the **Report Icon**.



2. Select your **Report Options** and tap **View** or **E-Mail** to generate the report..



Trap Counting Report Example

Traps Summary Report
Current Week: 03/24/2016 to 03/30/2016

Farm : Demo Farm

ID	Pest	Trap Name	Land	Pest Counts						
				03/24	03/25	03/26	03/27	03/28	03/29	03/30
1	CM	Demo Trap 1	Apple (F)	--	--	--	--	--	--	5

A	38	37	38	39	41	42	43	67	88	B	47	49	49	50	51	52	53	54	55	56	57	58	59	60	61	62	63	64
69	100	C	141	142	143	144	D	145	146	147	148	149	150	151	152	153	154	155	156	157	158	159	160					

No data: ■

0 Count: ■

Between 0 and threshold: ■

Threshold and above: ■

Numbers are trap IDs

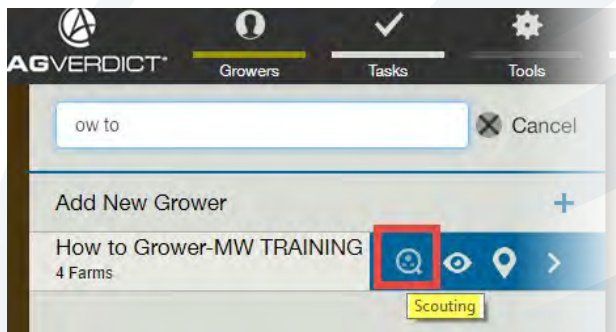
Created By Dharmesh Kothari on 6/8/2017 at 3:44 PM Page 1

© 2016 AgVerdict, Inc. AgVerdict and AgVerdict Logos are registered trademarks of AgVerdict, Inc. Knowledge Acquired, Intelligence Applied is a registered trademark of AgVerdict, Inc.

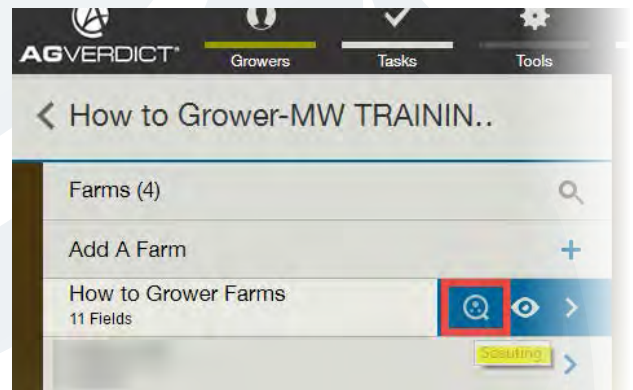
Scouting and Trap Counting (Web)

1. Login to the website <https://agverdict.net>.

2. Notice the new **Scouting icon** beside the Grower name.



3. Navigate to the Farm. Notice the new **Scouting Icon** beside the farm name and click on it.

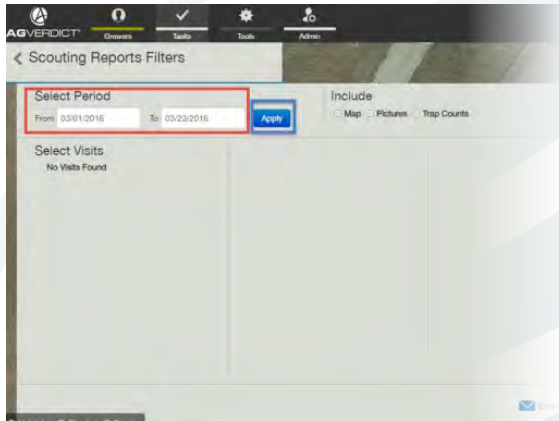


4. Click on the scouting visit and click on the **Reports Icon** ().

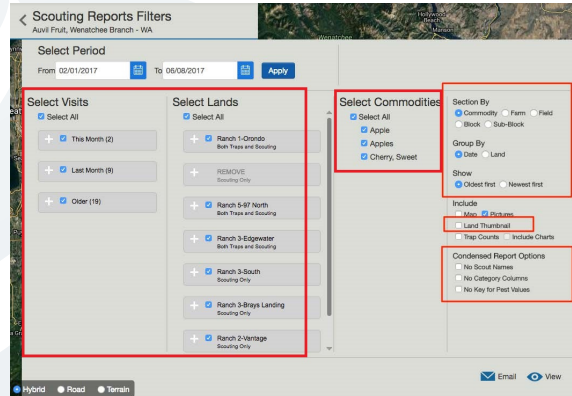




5. Select the desired **Period** for reporting and click **Apply**.



6. Select **Visits**, **Lands** and **Commodities** and other options Click **Email** or **View**.



Scouting Report

Date Range 2/29/2016 - 3/4/2016

Grower: Tabella, Treking Grower, Commodity: Apples, Cans

Date	Scout	Land	Stop	Block	Sub-Block	Commodity	Notes
2/29/2016							
Farm: Green River Apples Farms - West							
1	P	H	4	P	H		Display stop routes 1 here...
2	P	H	4	P	H		Display stop routes 2 here...
3	P	H	4	P	H		Display stop routes 3 here...
4	P	H	4	P	H		Display stop routes 4 here...
5	P	H	4	P	H		Display stop routes 5 here...
6	P	H	4	P	H		Display stop routes 6 here...
7	P	H	4	P	H		Display stop routes 7 here...
8	P	H	4	P	H		Display stop routes 8 here...
9	P	H	4	P	H		Display stop routes 9 here...
10	P	H	4	P	H		Display stop routes 10 here...
11	P	H	4	P	H		Display stop routes 11 here...
12	P	H	4	P	H		Display stop routes 12 here...
13	P	H	4	P	H		Display stop routes 13 here...
14	P	H	4	P	H		Display stop routes 14 here...
3/4/2016							
Yield ABC / Apples Block 1							
1	P	H	4	P	H		Display stop routes 1 here...
2	P	H	4	P	H		Display stop routes 2 here...
3	P	H	4	P	H		Display stop routes 3 here...
4	P	H	4	P	H		Display stop routes 4 here...
5	P	H	4	P	H		Display stop routes 5 here...
6	P	H	4	P	H		Display stop routes 6 here...
7	P	H	4	P	H		Display stop routes 7 here...
8	P	H	4	P	H		Display stop routes 8 here...

Instantly navigate between scouting and trap counting data from the scouting screen.

1. Navigate to the Scouting screen.

2. Click on the **Trap Counting Icon** (⚠️).



3. Click on the **Scouting Icon** (👤) will toggle back to the scouting screen.

